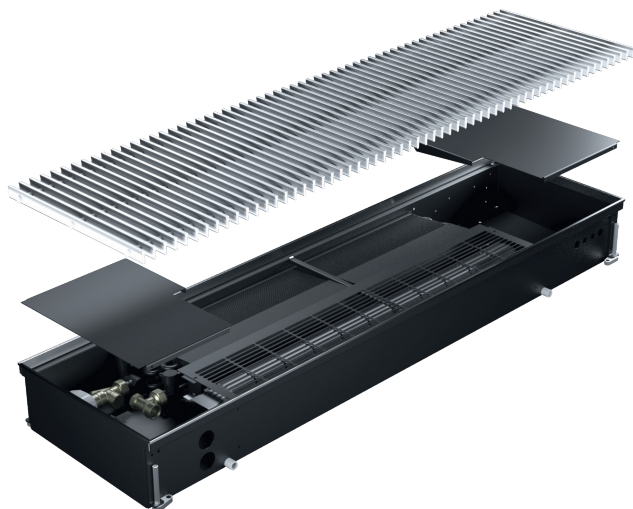


---

# KNX per CFP-ECM KNX for CFP-ECM



## ***Ventilconvettore a Pavimento Trench Convector Floor CFP-ECM***

IT – ISTRUZIONI DI MONTAGGIO E FUNZIONAMENTO  
EN – MOUNTING INSTRUCTIONS AND OPERATING LOGIC

---

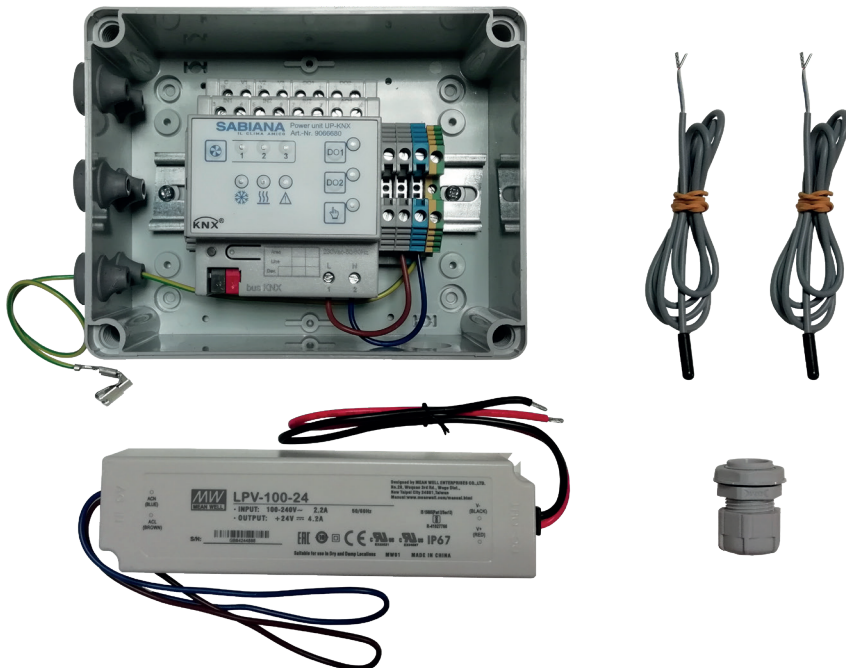


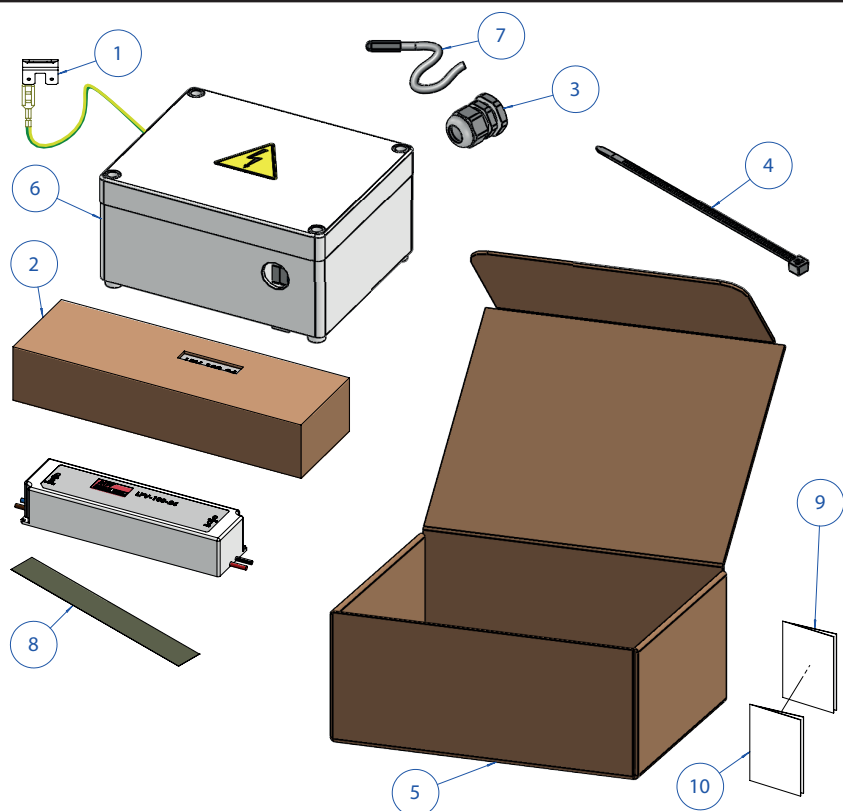
E 09/19  
A 09/19  
Cod. 4051238

- Comando motore per CFP-ECM
- Comando valvole on/off , tensione 230Vac
- Gestione della sonda aria, a bordo fan coil
- Gestione della sonda di minima acqua caldo/ freddo
- Gestione dell'ingresso finestra

## COLLEGAMENTI DEL KIT

- Collegamenti a carico dell'installatore :
- collegamento motore ecm
  - collegamento elettrovalvole
  - collegamento eventuali sonde aria/acqua
  - collegamento cavo KNX

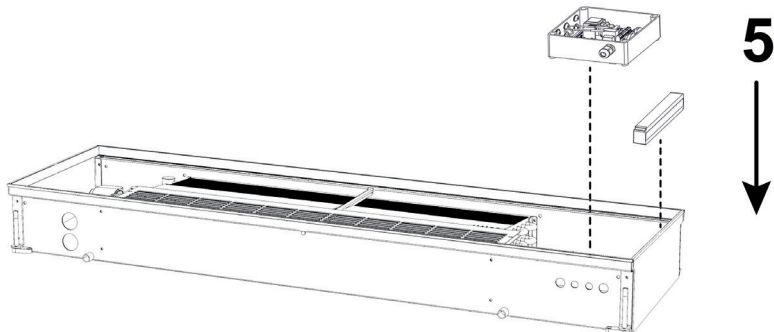
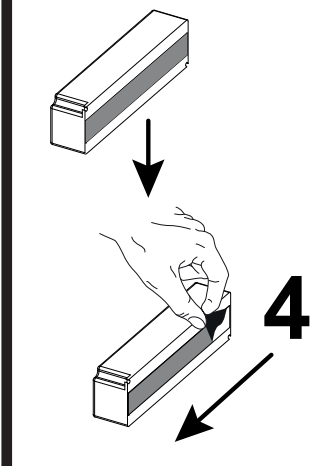
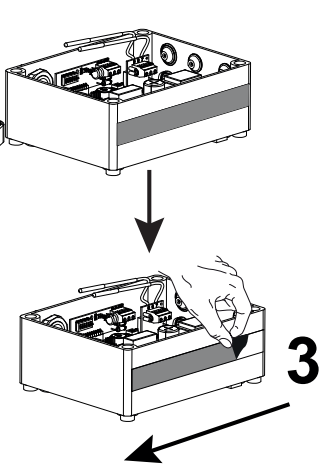
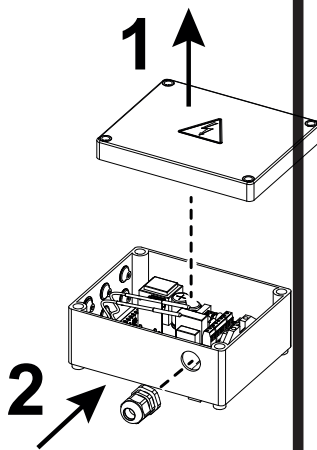
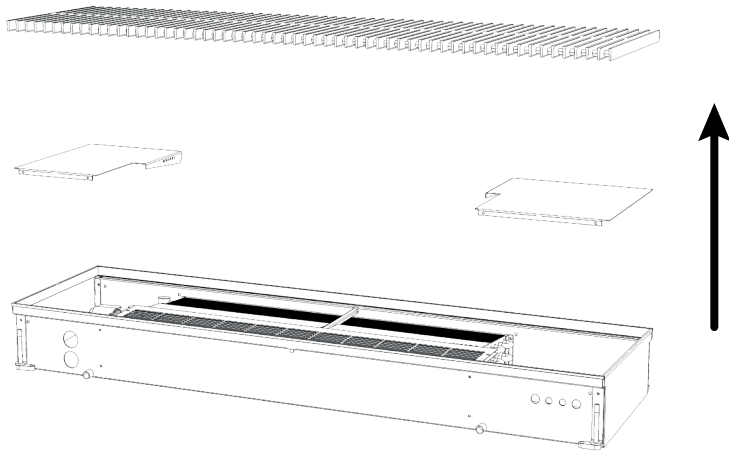


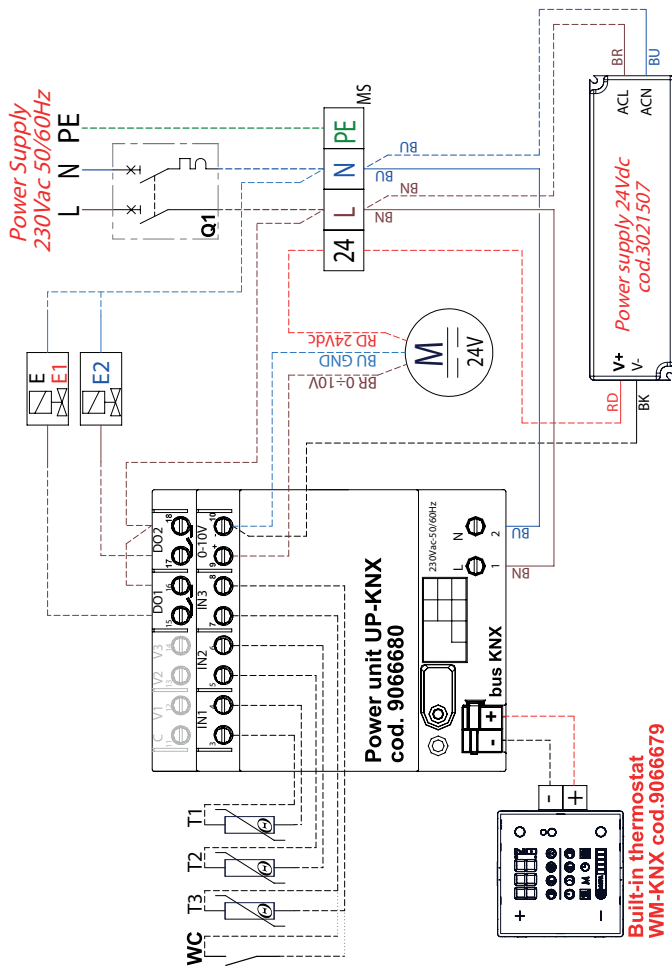


- 1 = Clip fissaggio messa a terra
- 2 = Alimentatore
- 3 = Pressacavo PG 13.5
- 4 = Fascetta bloccacavo
- 5 = Scatola imballo
- 6 = Scatola comando Konnex per CFP-ECM
- 7 = Sonde di temperatura aria/acqua
- 8 = Striscia biadesiva
- 9 = Manuale regolatore Konnex
- 10 = Schema elettrico CFP-ECM Konnex
- 11 = Etichetta dati prodotto CFP-ECM Konnex

**NOTA:** Sonda change-over opzionale cod.9025310

Da utilizzare solo con fan-coil 2 tubi e senza elettrovalvola





**IT'S NOT POSSIBLE MOUNT T2 CHANGE-OVER ON THE FOUR PIPES CONFIGURATION.**

-	CABLAGGIO DI PRODUZIONE
-	PRODUCTION WIRING
---	CONNESSIONE A CURA DELL'INSTALLATORE
---	CONNECTIONS RESPONSIBILITY OF THE INSTALLER

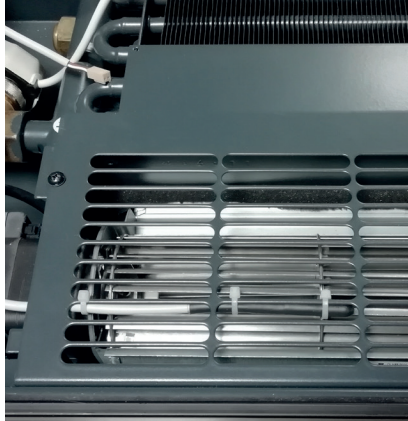
LITERAL CODE	COLORE	COLOUR
BK	BLACK	BLACK
BN	BROWN	BROWN
RD	RED	RED
OG	ORANGE	ORANGE
YE	YELLOW	YELLOW
GR	GREEN	GREEN
BU	BLUE	BLUE
VT	VIOLET	VIOLET
GY	GREY	GREY
WH	WHITE	WHITE
PK	PINK	PINK
GD	GOLD	GOLD
TQ	TURQUOISE	TURQUOISE
SR	SILVER	SILVER
GYE	GREEN-YELLOW	GREEN-YELLOW

ITEM	ENGLISH
Q1	AUTOMATIC SWITCH CIRCUIT BREAKER
M	FAN MOTOR
MS	SERVICE CLAMP
E	ON-OFF 230Vac ACTUATOR WATER VALVE
E1	ON-OFF 230Vac ACTUATOR HOT WATER VALVE
E2	ON-OFF 230Vac ACTUATOR COLD WATER VALVE
T1	RETURN AIR TEMPERATURE
T2	CHANGE-OVER
T3	MINIMUM H2O TEMPERATURE
WC	WINDOW FREE CONTACT

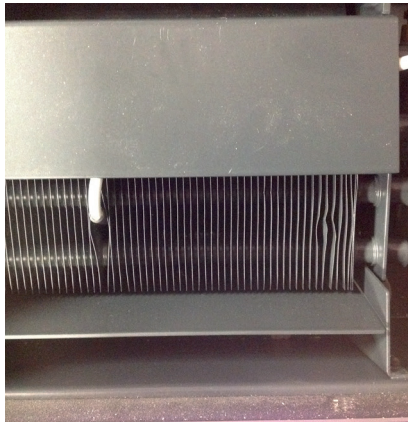
ITEM	ITALIANO
Q1	INTERRUTTORE AUTOMATICO MAGNETO TERMICO SEZIONATORE
M	ELETTROVENTILATORE
MS	MORSETTO DI SERVIZIO
E	ATTUATORE ON-OFF 230Vac VALVOLA ACQUA
E1	ATTUATORE ON-OFF 230Vac VALVOLA CALDA
E2	ATTUATORE ON-OFF 230Vac VALVOLA FREDDA
T1	SONDA ARIA
T2	SONDA CHANGE-OVER
T3	SONDA DI MINIMA
WC	CONTATTO FINESTRA

**Built-in thermostat WM-KNX cod. 9066679**

Posizionamento sonda aria



Posizionamento sonda acqua in batteria



Motor control for CFP-ECM

ON/OFF valve control, power supply 230Vac

Management of the air probe, mounted on the fan coil unit

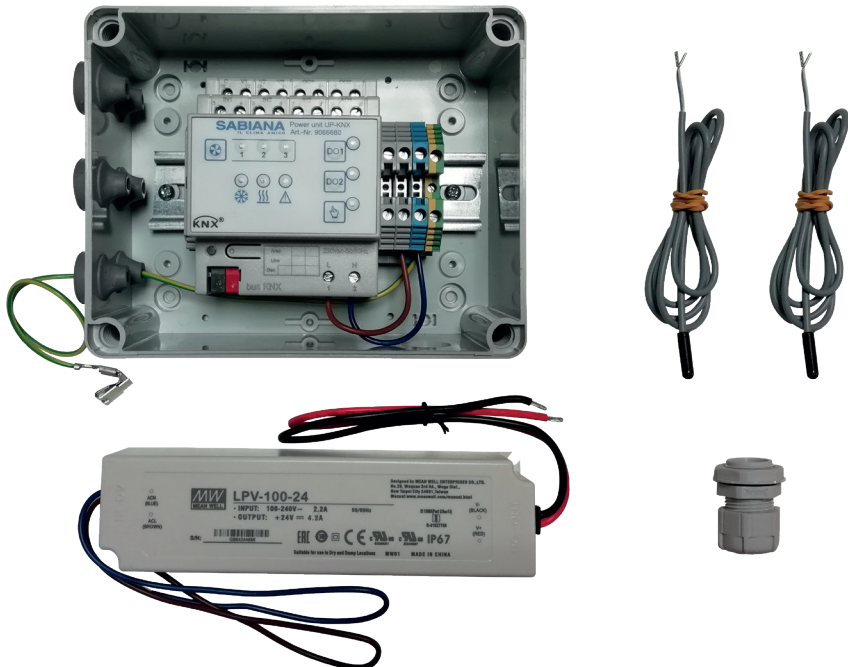
Management of the hot/cold water low temperature cut-out thermostat

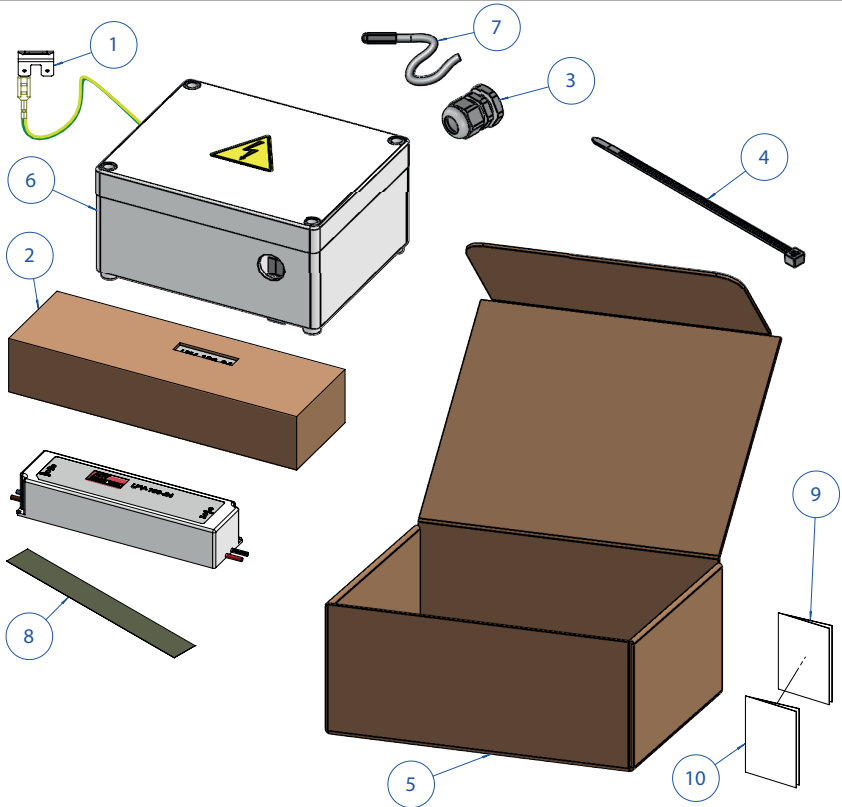
Management of the input circuit

## KIT CONNECTIONS

Connections by the installer :

- ecm motor connection
- Valve actuator connection
- Possible air/water probes connection
- KNX cable connection

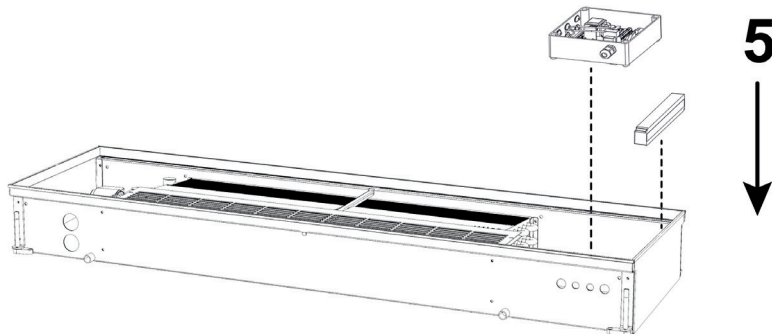
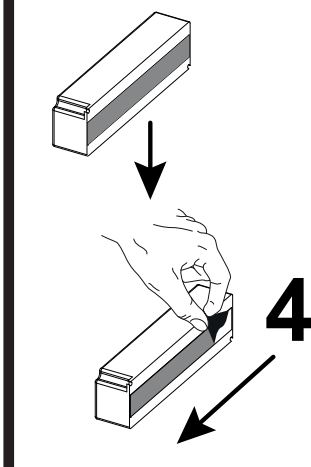
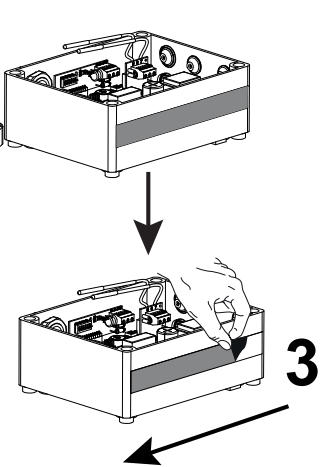
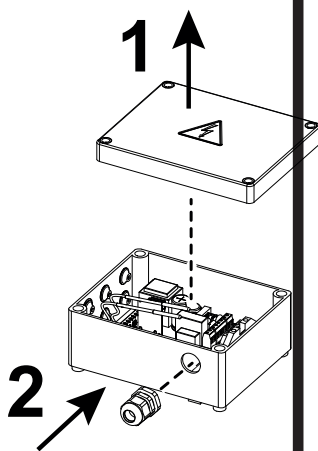
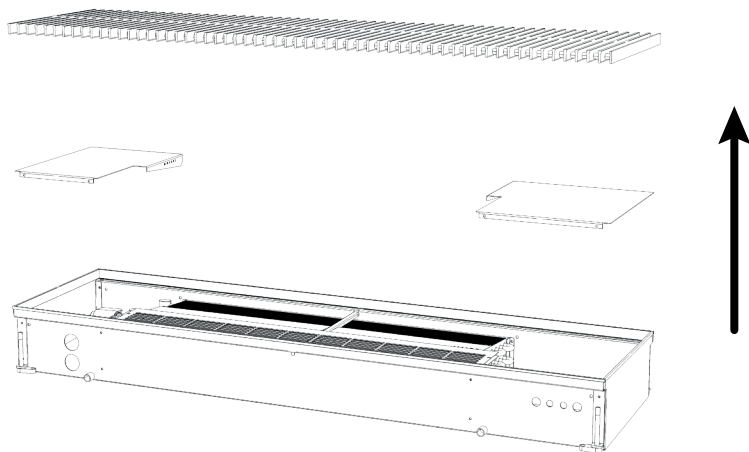


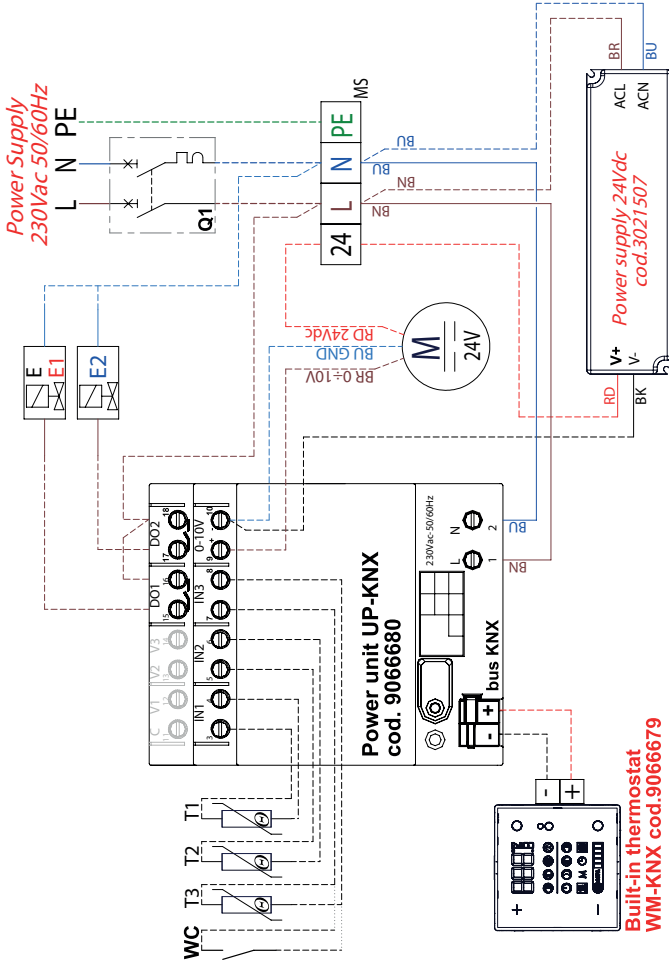


- 1 = Clip for grounding
- 2 = Power supply
- 3 = Plastic cable gland PG 13.5
- 4 = Plastic wire tie strap
- 5 = Packaging
- 6 = Konnex control board for CFP-ECM
- 7 = Air/water temperature probes
- 8 = Adhesive strip
- 9 = Konnex instruction manual
- 10 = CFP-ECM Konnex wiring diagram
- 11 = CFP-ECM Konnex product data table

**NOTE:** *Optional change-over cod.9025310*

To use only with 2 pipe fan coil units and without sinusoidal valve





**⚠ IT'S NOT POSSIBLE MOUNT IT 2 CHANGE-OVER ON THE FOUR PIPES CONFIGURATION.**

**Built-in thermostat WM-KNX cod.9066679**

- CARLAGGIO DI PRODUZIONE  
- CONNESSIONE A CURA DELL'INSTALLATORE. LA RESPONSABILITÀ È DELL'INSTALLATORE.

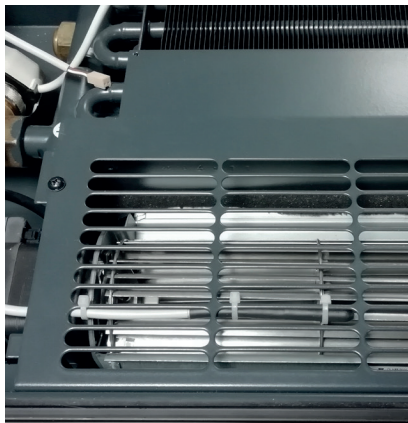
CEI 16-6 COLORS TABLE

LITERAL CODE	COLORE	COLOUR
BK	BLACK	BLACK
BN	BROWN	BROWN
RD	RED	RED
OG	ORANGE	ORANGE
YE	YELLOW	YELLOW
GR	GREEN	GREEN
BU	BLUE	BLUE
VT	VIOLET	VIOLET
GY	GREY	GREY
WH	WHITE	WHITE
PK	PINK	PINK
GD	GOLD	GOLD
TQ	TURQUOISE	TURQUOISE
SR	SILVER	SILVER
GYE	GREEN-YELLOW	GREEN-YELLOW

ITEM	ENGLISH
Q1	AUTOMATIC SWITCH CIRCUIT BREAKER
M	FAN MOTOR
MS	SERVICE CLAMP
E	ON-OFF 230V <sub>ac</sub> ACTUATOR WATER VALVE
E1	ON-OFF 230V <sub>ac</sub> ACTUATOR HOT WATER VALVE
E2	ON-OFF 230V <sub>ac</sub> ACTUATOR COLD WATER VALVE
T1	RETURN AIR TEMPERATURE
T2	CHANGE-OVER
T3	MINIMUM H <sub>2</sub> O TEMPERATURE
WC	WINDOW FREE CONTACT

ITEM	ITALIANO
Q1	INTERRUTTORE AUTOMATICO MAGNETOTERMICO SEZIONATORE
M	ELETTROVENTILATORE
MS	MORSETTO DI SERVIZIO
E	ATTUATORE ON-OFF 230V <sub>ac</sub> VALVOLA ACQUA
E1	ATTUATORE ON-OFF 230V <sub>ac</sub> VALVOLA CALDA
E2	ATTUATORE ON-OFF 230V <sub>ac</sub> VALVOLA FREDDA
T1	SONDA ARIA
T2	SONDA CHANGE-OVER
T3	SONDA DI MINIMA
WC	CONTATTO FINESTRA

Setting of the air probe



Setting of the water probe into the coil

