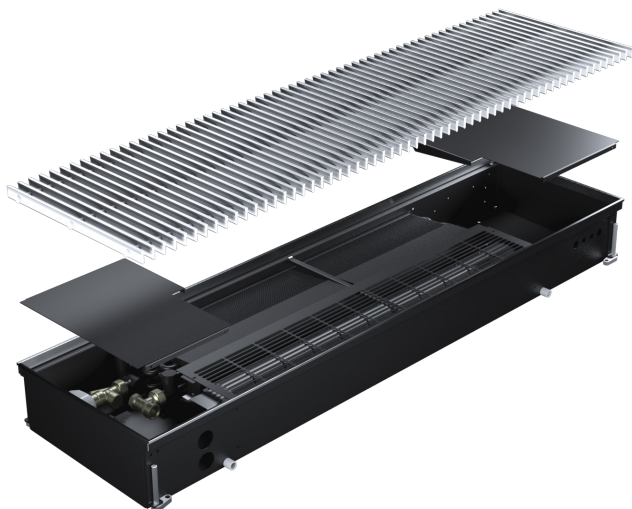


---

# KIT scheda KNX-CFP-ECM-B20

## KNX-CFP-ECM-B20 board kit



***Ventilconvettore a Pavimento***  
***Trench Convector Floor***  
***CFP-ECM***  
***CSP-ECM***

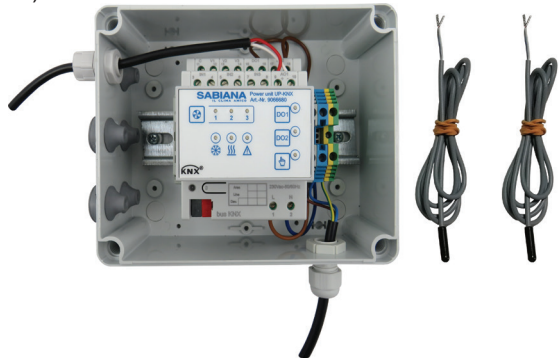
IT – ISTRUZIONI DI MONTAGGIO E FUNZIONAMENTO  
EN – MOUNTING INSTRUCTIONS AND OPERATING LOGIC

---

- Comando motore per CFP-ECM
- Comando valvole on/off, tensione 230Vac
- Gestione della sonda aria, a bordo fan coil
- Gestione della sonda di minima acqua caldo/ freddo
- Gestione dell'ingresso finestra

**COLLEGAMENTI DEL KIT**

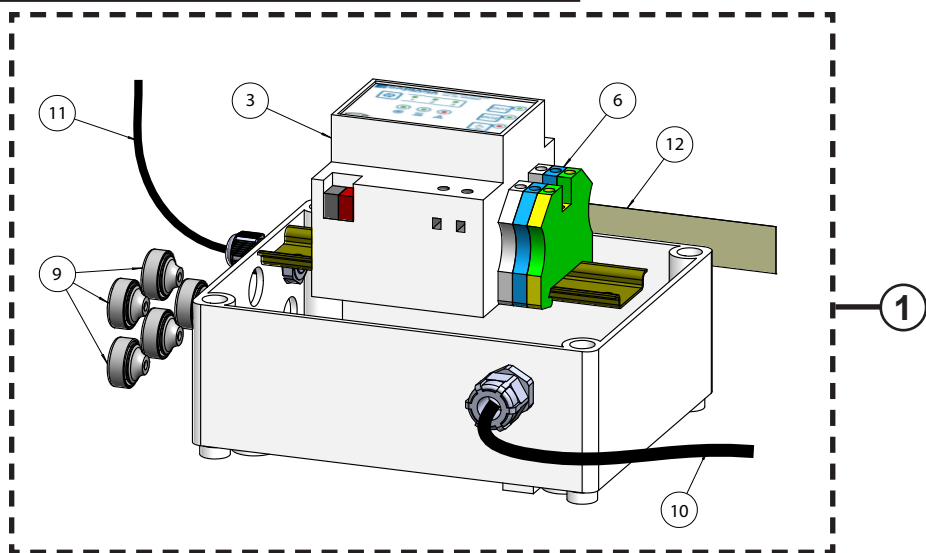
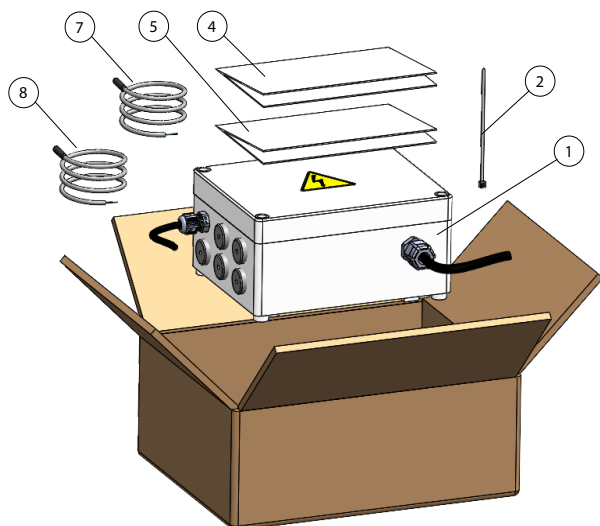
- Collegamenti a carico dell'installatore :
- collegamento cavo alimentazione 230 Vac scheda
  - collegamento cavo segnale 0÷10 Vdc ventilatore
  - collegamento elettrovalvole
  - collegamento eventuali sonde aria/acqua
  - collegamento cavo KNX (opzionale)

**COMPOSIZIONE DEL KIT**

- modulo KNX
- morsetti utenza
- sonda T1 ambiente
- sonda T3 di minima acqua
- cavo di alimentazione 230 Vac
- cavo di segnale 0÷10 Vdc
- passacavi per ingresso collegamento accessori
- fascette

**NOTA:** Sonda T2 change-over opzionale  
cod.9025310

Da utilizzare solo con fan-coil 2 tubi e senza  
elettrovalvola



1 = Scatola comando KNX

2 = Fascette

3 = Modulo Konnex

4 = Manuale istruzioni Konnex

5 = Foglio istruzioni Konnex

6 = Morsetti utenza

7 = Sonda temperatura Aria in ripresa (T1)

8 = Sonda temperatura Acqua (T3)

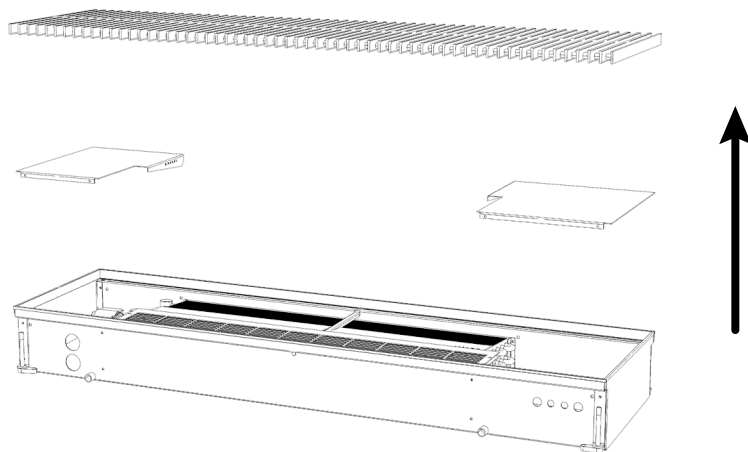
9 = Passacavi

10 = Cavo alimentazione 230 Vac

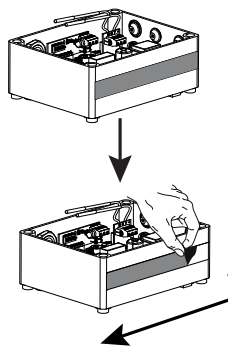
11 = Cavo segnale 0÷10 Vdc

12 = Striscia biadesiva

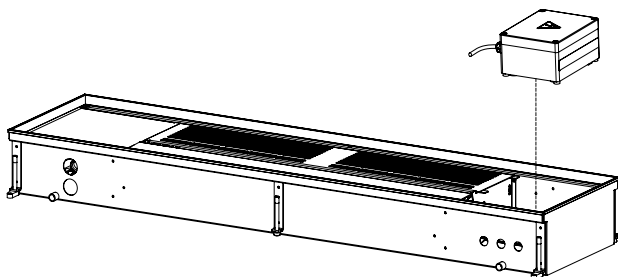
1



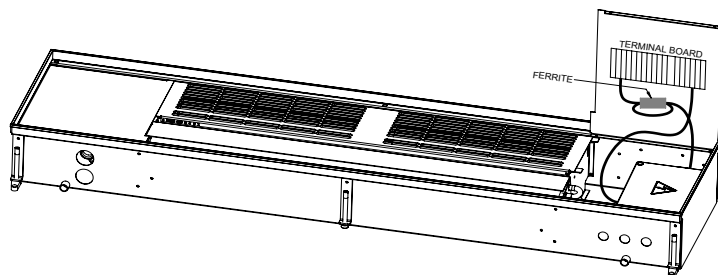
2



3



4

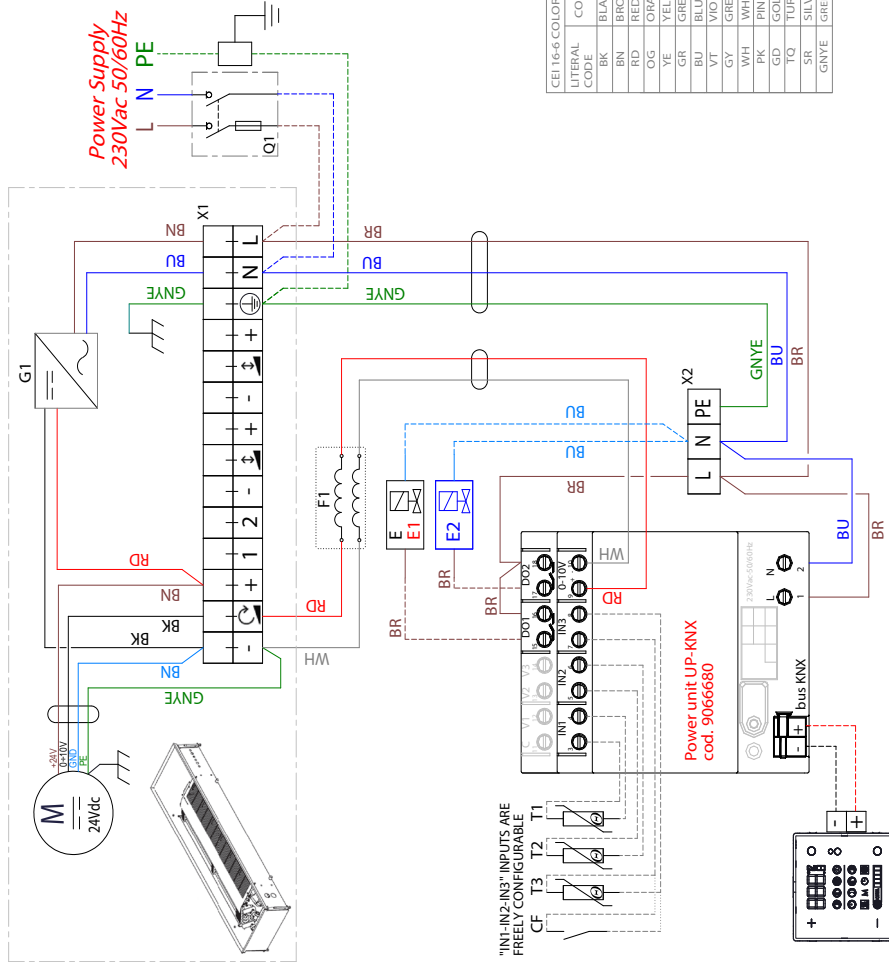


ITEM	ITALIANO
M	MOTO-VENTILATORE
Q1	INTERRUTTORE DI MANOVRA
X1	SEZIONATORE TP+N
X2	MORSETTIERA FANCOIL
G1	MORSETTIERA QUADRO
F1	ALIMENTATORE 24VDC
FERRITE	FERRITE
ITEM	OPZIONI
E	ATTUATORE VALVOLA ACQUA
E1	ATTUATORE VALVOLA ACQUA CALDA
E2	ATTUATORE VALVOLA ACQUA FREDDA
T1	SONDA ARIA
T2	SONDA CHANGE-OVER
T3	SONDA DI MINIMA
CF	CONTATTO FINESTRA

ITEM	ENGLISH
M	FAN MOTOR
Q1	TP+N SWITCH-DISCONNECTOR
X1	FANCOIL TERMINAL BOARD
G1	24VDC POWER SUPPLY
F1	FERRITE
ITEM	OPTIONS
E	WATER VALVE ACTUATOR
E1	HOT WATER VALVE ACTUATOR
E2	COLD WATER VALVE ACTUATOR
T1	AIR PROBE
T2	CHANGE-OVER PROBE
T3	MINIMUM PROBE
CF	WINDOW CONTACT

---	- CABLAGGIO DI PRODUZIONE
---	- PRODUCTION WIRING
---	- CONNESSIONE A CURA DELL'INSTALLATORE
---	- CONNECTION RESPONSABILITY OF THE INSTALLER

LITERAL CODE	COLOUR
BK	BLACK
BN	BROWN
RD	RED
OG	ORANGE
YE	YELLOW
GR	GREEN
BU	BLUE
VT	VIOLET
GY	GREY
WH	WHITE
PK	PINK
GD	GOLD
TQ	TURQUOISE
SR	SILVER
GNYE	GREEN-YELLOW



## DETTAGLI COLLEGAMENTI

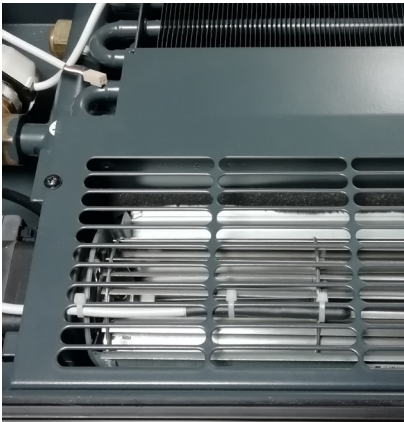
Inserimento ferrite (fornita a corredo del ventilconvettore) sul cavo di segnale 0÷10 Vdc (necessario doppio avvolgimento).



Collegamento cavi di alimentazione 230V e segnale 0÷10 Vdc ventilatore in morsettiera presente sullo sportello del ventilconvettore.



Posizionamento sonda aria T1



Posizionamento sonda acqua T3 in batteria



Motor control for CFP-ECM

ON/OFF valve control, power supply 230Vac

Management of the air probe, on the fan coil unit

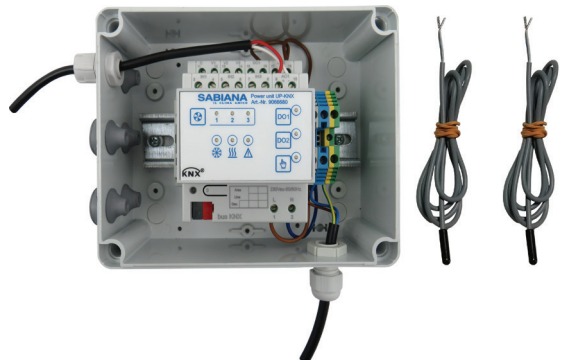
Management of the hot/cold water low temperature cut-out thermostat

Management of the input circuit

### **KIT CONNECTIONS**

Connections by the installer:

- Power supply board cable 230 Vac connection
- Signal fan cable 0÷10 Vdc connection
- Valve actuator connection
- Any air/water probes connection
- KNX cable connection (optional)

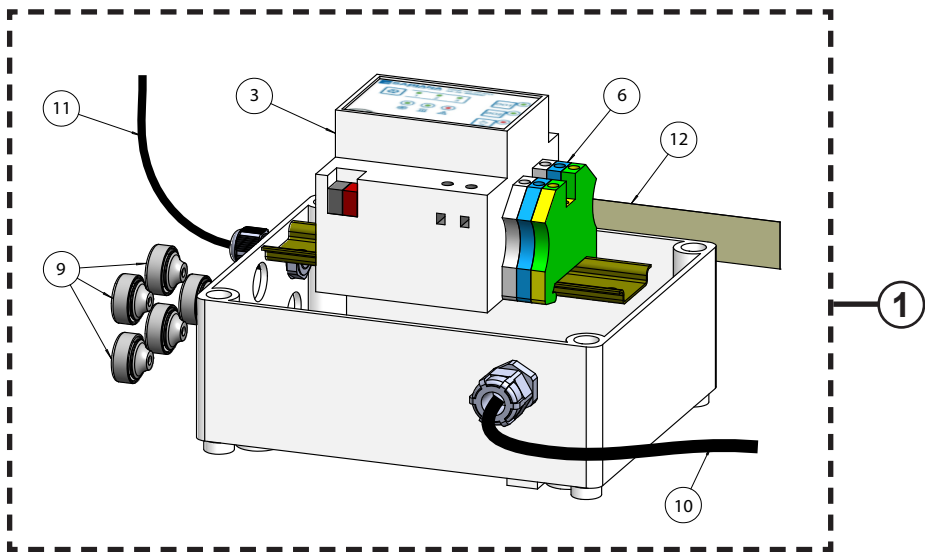
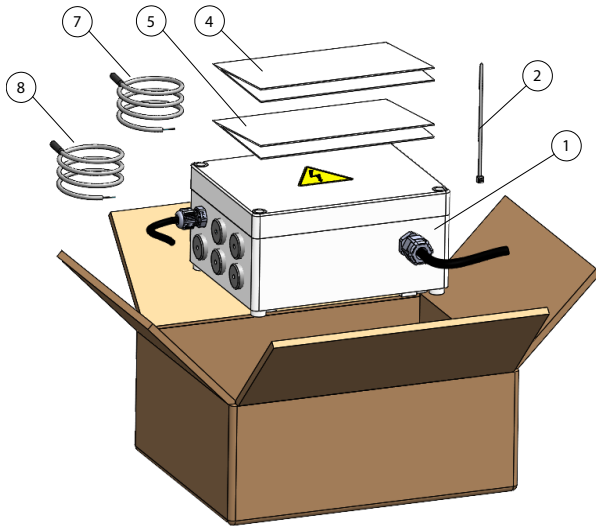


### **KIT COMPOSITION**

- KNX board
- User clamps
- T1 Ambient probe
- T3 Water low temperature cut-out thermostat
- Power supply cable 230 Vac
- Signal cable 0÷10 Vdc
- Plastic protections for accessory connection inlet
- Cable ties

**NOTE:** *Optional T2 change-over cod. 9025310*

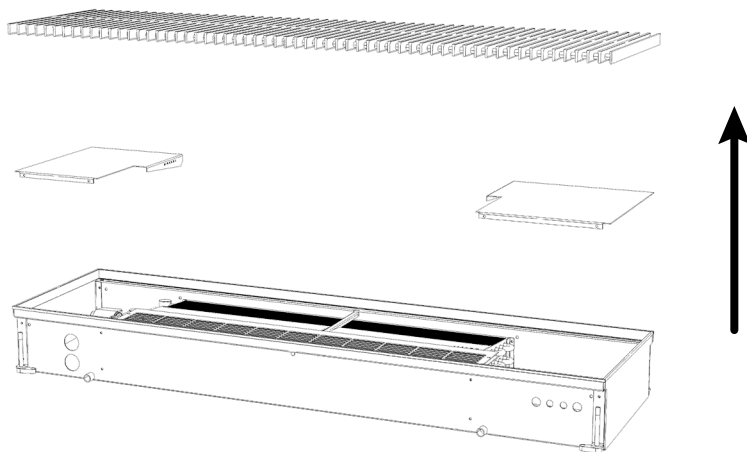
To use only with 2 pipe fan coil units and without sinusoidal valve



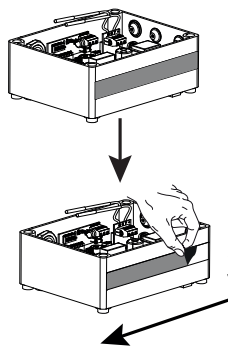
- 1 = KNX control box
- 2 = Cable ties
- 3 = Konnex Module
- 4 = Konnex instruction manual
- 5 = Konnex instruction sheet
- 6 = User clamps

- 7 = Return air probe (T1)
- 8 = Water probe (T3)
- 9 = Plastic protections
- 10 = Power supply 230 Vac
- 11 = Signal cable 0÷10 Vdc
- 12 = Adhesive strip

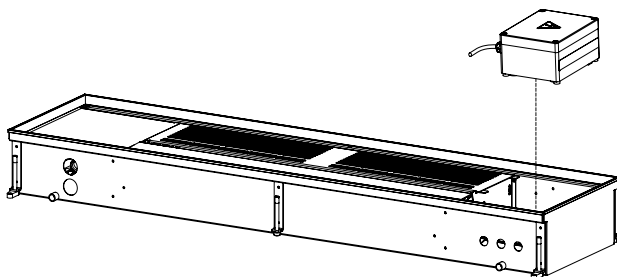
1



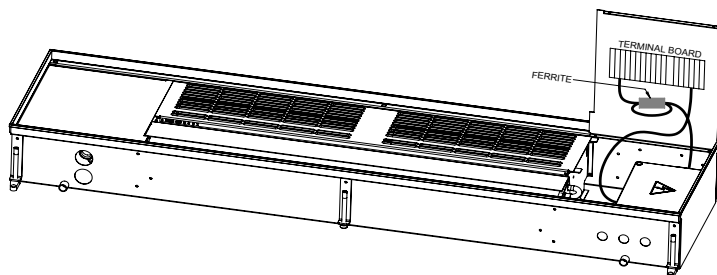
2



3



4

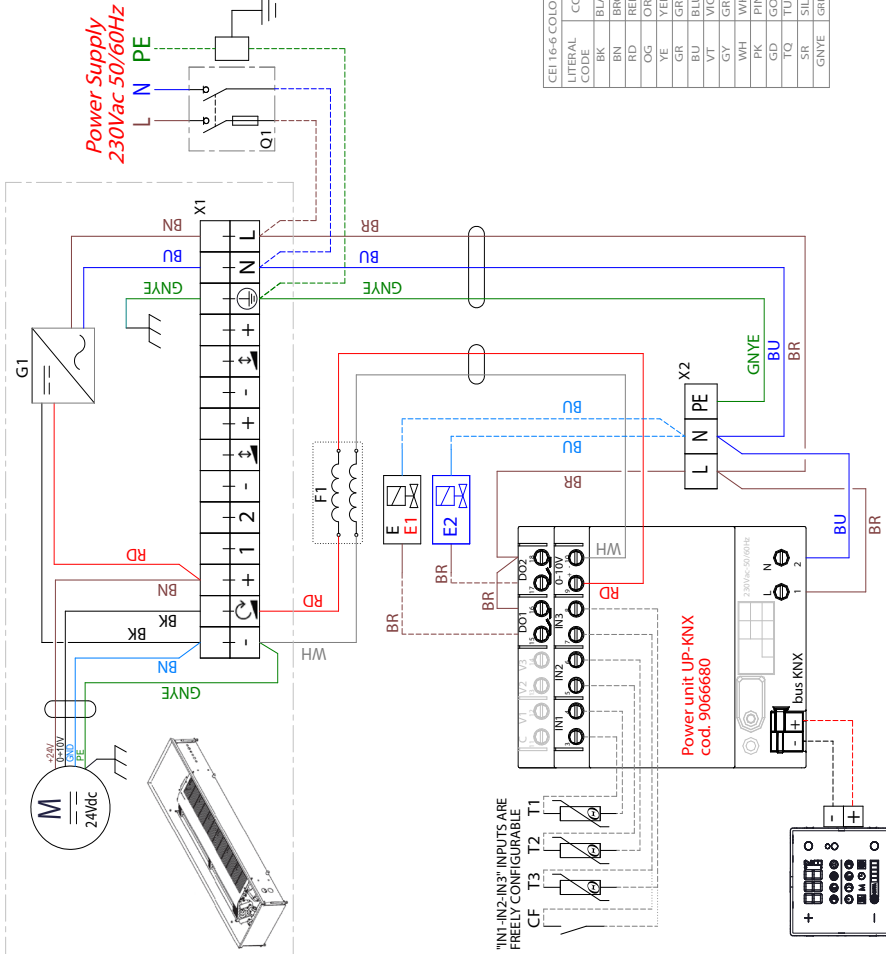


ITEM	ITALIANO
M	MOTO-VENTILATORE
Q1	INTERRUTTORE DI MANOVRA SEZIONATORE 1P+N
X1	MORSETTIERA FANCOIL
X2	MORSETTIERA QUADRO
G1	ALIMENTATORE 24VDC
F1	FERRITE
ITEM	OPZIONI
E	ATTUATORE VALVOLA ACQUA
E1	ATTUATORE VALVOLA ACQUA CALDA
E2	ATTUATORE VALVOLA ACQUA FREDDA
T1	SONDA ARIA
T2	SONDA CHANGE-OVER
T3	SONDA DI MINIMA
CF	CONTATTO FINESTRA

ITEM	ENGLISH
M	FAN MOTOR
Q1	1P+N SWITCH DISCONNECTOR
X1	FANCOIL TERMINAL BOARD
G1	24VDC POWER SUPPLY
F1	FERRITE
ITEM	OPTIONS
E	WATER VALVE ACTUATOR
E1	HOT WATER VALVE ACTUATOR
E2	COLD WATER VALVE ACTUATOR
T1	AIR PROBE
T2	CHANGE-OVER PROBE
T3	MINIMUM PROBE
CF	WINDOW CONTACT

-	- CABLAGGIO DI PRODUZIONE
-	- PRODUCTION WIRING
-	- CONNESSIONE A CURA DELL'INSTALLATORE
-	- CONNECTION RESPONSABILITY OF THE INSTALLER

CEI 16-6 COLORS TABLE	COLOUR
LITERAL CODE	
BK	BLACK
BN	BROWN
RD	RED
OG	ORANGE
YE	YELLOW
GR	GREEN
BU	BLUE
VT	VIOLET
GY	GREY
WH	WHITE
PK	PINK
GD	GOLD
TQ	TURQUOISE
SR	SILVER
GNYE	GREEN-YELLOW



**CONNECTION DETAILS**

Ferrite insertion (supplied with the fan coil) on the signal cable 0÷10 Vdc (double wiring mandatory)



Power supply cables 230 Vac connection and ventilation signal 0÷10 Vdc in terminal board fitted on the fan coil opening



Setting of the air probe T1



Setting of the water probe T3 into the coil

