

## **ELECTROSTATIC FILTER 9079295-/9079296-**

Filtro elettrostatico / Electrostatic filter / Filtre électrostatique / Elektrostatischer Filter / Filtro electrostático

- IT** ISTRUZIONI DI MONTAGGIO
- EN** MOUNTING INSTRUCTIONS
- FR** INSTRUCTIONS DE MONTAGE
- DE** MONTAGEANLEITUNGEN
- ES** INSTRUCCIONES DE MONTAJE




- IT** *Gentile cliente,  
la ringraziamo per la fiducia accordataci con l'acquisto di un nostro prodotto.  
Se Lei avrà la costanza di seguire attentamente le indicazioni contenute nel presente manuale, siamo certi che potrà apprezzarne nel tempo e con soddisfazione la qualità.  
Prima della messa in funzione, leggere attentamente il manuale di istruzioni.*
- EN** *Dear customer,  
we thank you for your confidence in the purchase of this product.  
By following carefully the instructions contained in this manual you will be sure to appreciate its quality.  
Before installation and commissioning, read the following user information manual carefully.*
- FR** *Cher client,  
nous vous remercions de la confiance que vous nous accordez en achetant un de nos produits.  
Prière de lire attentivement les indications contenues dans le manuel, concernant l'utilisation correcte de notre produit, conformément aux prescriptions essentielles de sécurité.  
Avant la mise en marche, lire attentivement le mode d'emploi.*
- DE** *Sehr geehrter Kunde,  
wir danken Ihnen für das uns durch den Erwerb eines unserer Produkte entgegengebrachte Vertrauen.  
Wenn Sie die Ausdauer haben, aufmerksam die im vorliegenden Handbuch enthaltenen Hinweise zu beachten, sind wir gewiß, daß Sie lange und mit Zufriedenheit die Qualität unserer Maschine schätzen werden können.  
Lesen Sie vor der Inbetriebnahme aufmerksam die Bedienungsanleitung.*
- ES** *Apreciado cliente:  
Le agradecemos que haya decidido confiar en nosotros al adquirir uno de nuestros productos.  
Si es usted perseverante y sigue escrupulosamente las instrucciones contenidas en este manual, estamos seguros de que podrá apreciar la calidad de nuestra máquina con el paso del tiempo.  
Antes de comenzar, lea atentamente el manual de instrucciones.*

IT	da p. 5
EN	from 18
FR	à partir de la p. 31
DE	von der S. 44
ES	de la p. 56

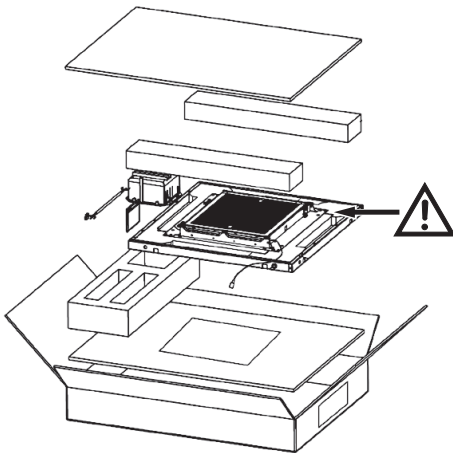
1	Introduzione	5
2	Cassette 600 - Cod. 9079295	5
3	Cassette 800 - Cod. 9079296	11

## 1 INTRODUZIONE

 IL PRESENTE MANUALE DEVE ESSERE CONSIDERATO DOCUMENTO DI INTEGRAZIONE DA UTILIZZARSI CONGIUNTAMENTE AL "MANUALE DI ISTRUZIONI PER INSTALLAZIONE, USO E MANUTENZIONE FILTRO ELETTROSTATICO PER CASSETTE" Cod. 4051342-.

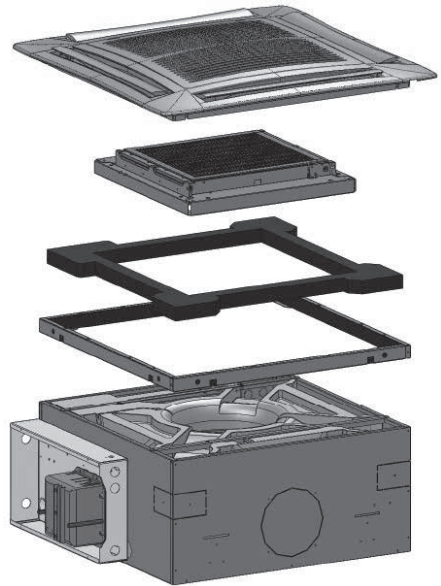
## 2 CASSETTE 600 - COD. 9079295

2.1

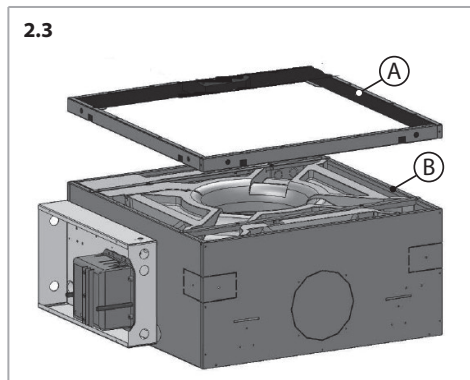


 14 tamponi in polietilene, fanno parte del filtro e non sono da buttare.

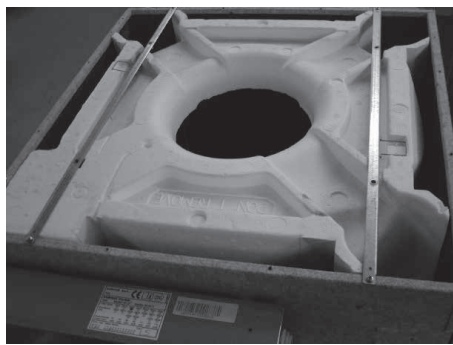
2.2



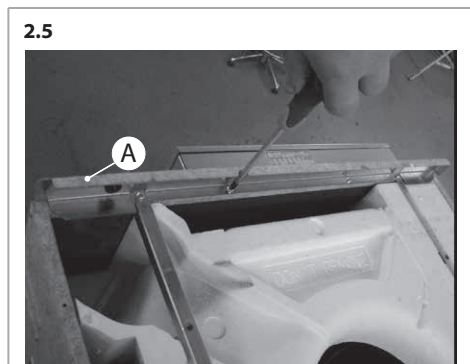
Applicare il telaio "A" all'unità "B".



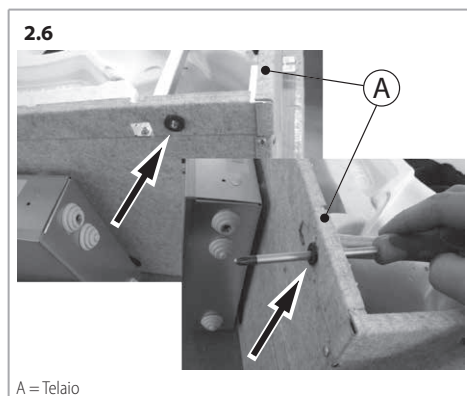
**2.4 Unità "B"**



Fissare il telaio "A" con le 8 viti 3,9 x 9,5 mm (incluse).



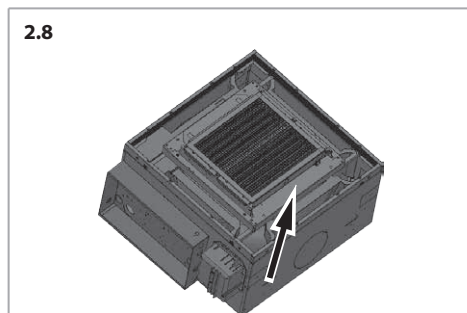
Applicare il passacavo per cavo alta tensione (incluso) sul lato apparecchiatura elettrica.



Applicare la coibentazione autoadesiva sui 4 lati del telaio.



Posizionare il telaio filtro con la cerniera di rotazione posta sul lato indicato in fig.2.8.



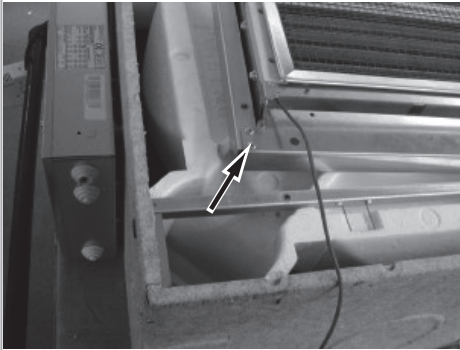
Fissare il filtro con le 4 viti M 5x35 mm (incluse).

**2.9**



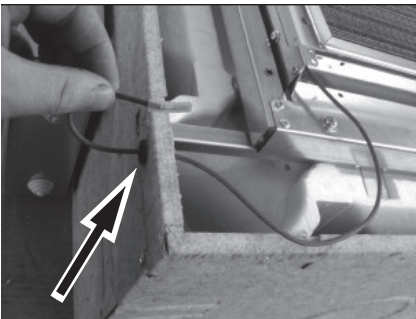
Posizione del filtro con il cavo alta tensione verso l'apparecchiatura elettrica.

**2.10**



Far passare il cavo alta tensione dal passacavo lato apparecchiatura elettrica.

**2.11**

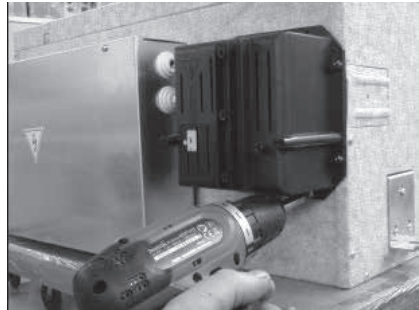


Fissare l'apparecchiatura alta tensione con le 3 viti auto perforanti 3,9x13 mm (incluse).

**2.12**

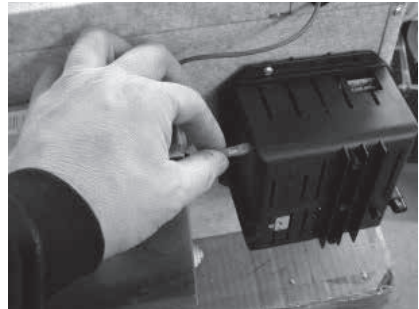


**2.13**



Collegare il cavo alta tensione.

**2.14**

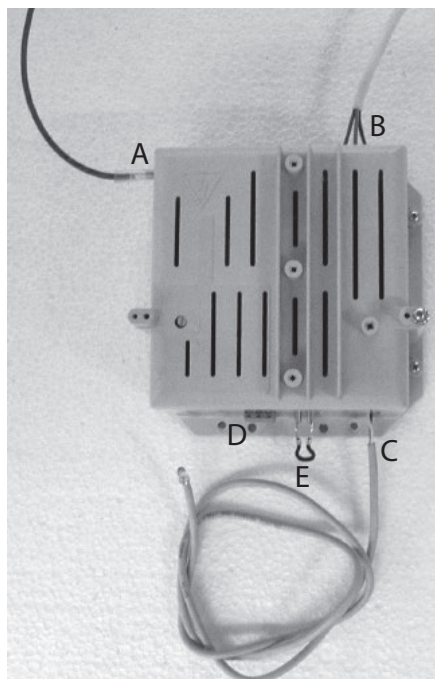


Collegare il connettore per L-N-PE.

### 2.15

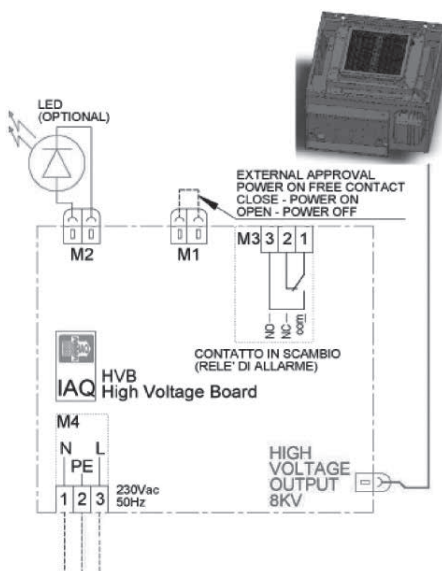


### 2.16



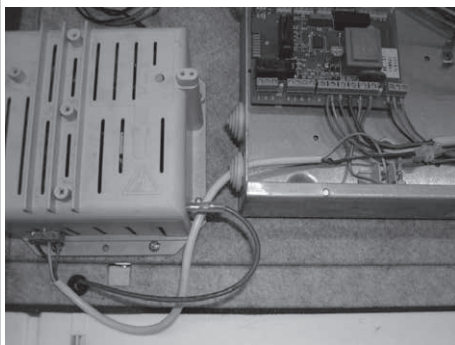
- A Cavo alta tensione - faston 6,3 con isolamento esterno in silicone.  
 B Morsetteria di alimentazione 230 Volt L-N-PE.  
 C Connettore di collegamento LED verde di segnalazione funzionamento filtro (collegamento opzionale).  
 D Morsetteria relè di allarme filtro sporco. Contatto pulito in scambio remotizzabile.  
 E Contatto ON-OFF.

### 2.17

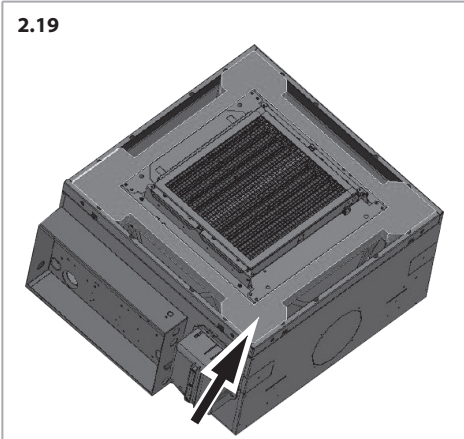
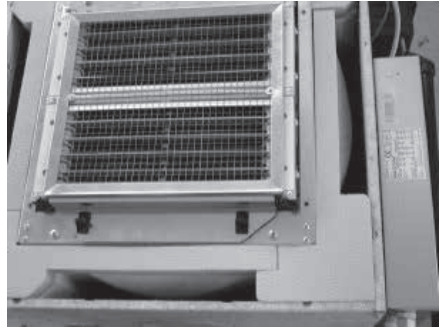


Collegamento cavi all'apparecchiatura.

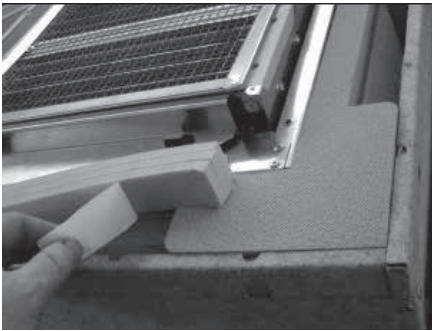
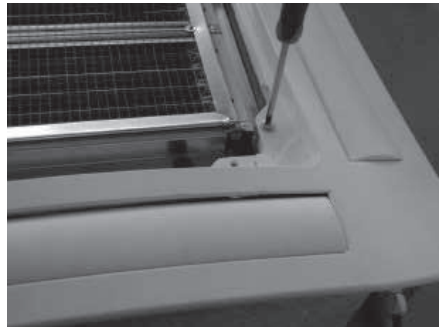
### 2.18



Applicare n° 4 tamponi autoadesivi attorno al telaio filtro.



**2.19****2.21**


Fissare la plafoniera con le 4 viti M5x35 mm (incluse con la plafoniera).

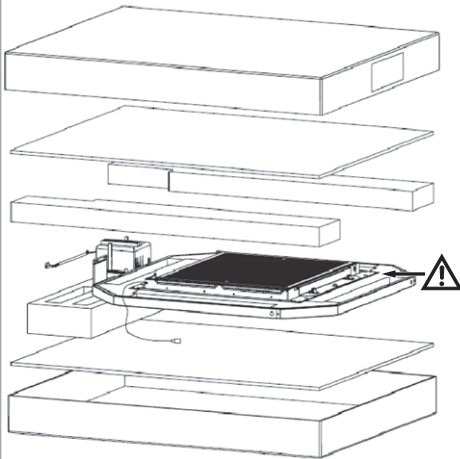
**2.20****2.22**

Etichetta dati CE filtro elettrostatico da applicare congiuntamente all'etichetta dati CE ventilatore.

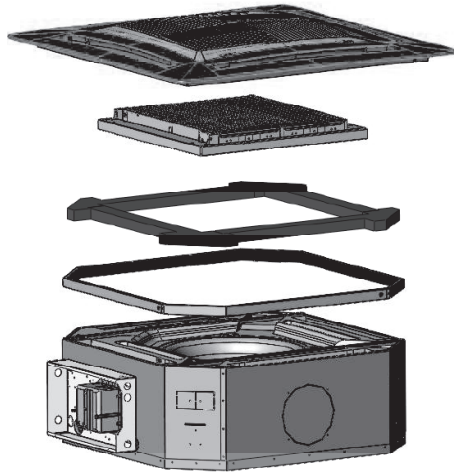
**2.23**

			
FANCOIL <b>CASSETTE</b> VERSION		ELECTROSTATIC FILTER	
MODEL		+ MODEL - CRY	
CODE <b>0000000</b>		+ MAX ELECTROSTATIC FILTER POWER INPUT <b>10 Watt</b>	
GRANDEZZA SIZE <b>3</b>	TUBI PIPES <b>2</b>	<b>230Vac 50Hz</b>	
MAX MOTOR FAN POWER INPUT <b>102,5 Watt</b>		QUALITY CONTROL	
DATE <b>20-08-2020</b>	MADE IN EU	230V 50/60Hz	
QUALITY CONTROL		QUALITY CONTROL	

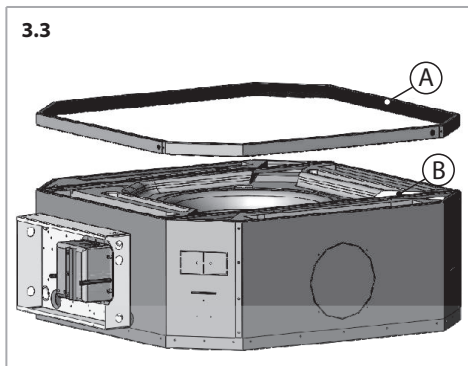


**3 CASSETTE 800 - COD. 9079296****3.1**

4 tamponi in polietilene, fanno parte del filtro e non sono da buttare.

**3.2**

Applicare il telaio "A" all'unità "B".

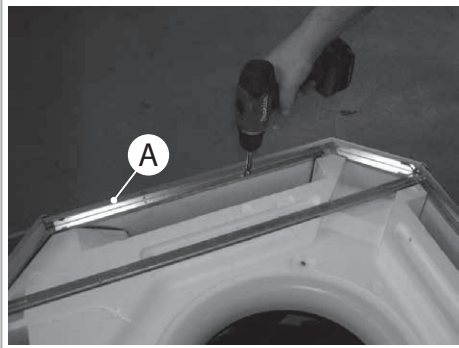


**3.4 Unità "B"**

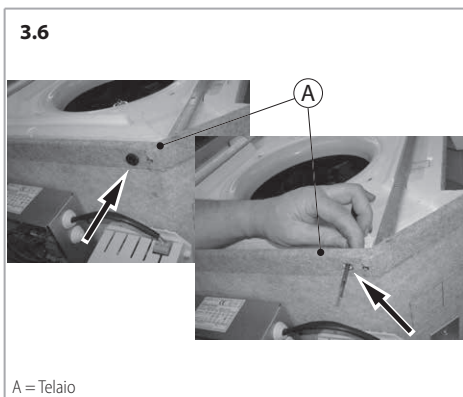


Fissare il telaio "A" con le 8 viti 3,9 x 9,5 mm (incluse).

**3.5**



Applicare il passacavo per cavo alta tensione (incluso) sul lato apparecchiatura elettrica.



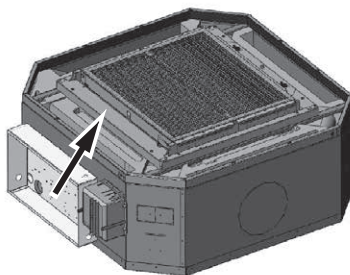
Applicare la coibentazione autoadesiva sui 4 lati del telaio.

**3.7**



Posizionare il telaio filtro con la cerniera di rotazione posta sul lato indicato in fig.3.8.

**3.8**



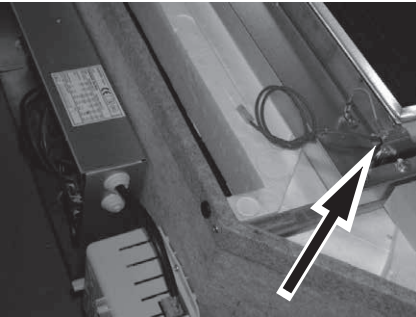
Fissare il filtro con le 4 viti M 5x35 mm (incluse).

**3.9**



Posizione del filtro con il cavo alta tensione verso l'apparecchiatura elettrica.

**3.10**



Far passare il cavo alta tensione dal passacavo lato apparecchiatura elettrica.

**3.11**



Fissare l'apparecchiatura alta tensione con le 3 viti auto perforanti 3,9x13 mm (incluse).

**3.12**

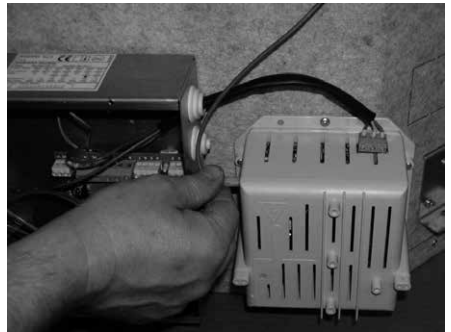


**3.13**



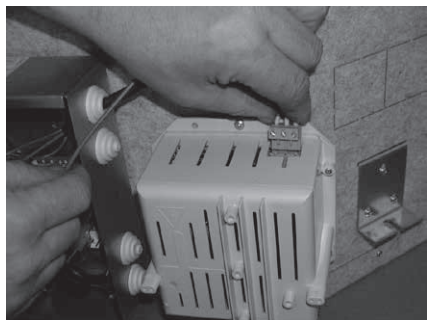
Collegare il cavo alta tensione.

**3.14**

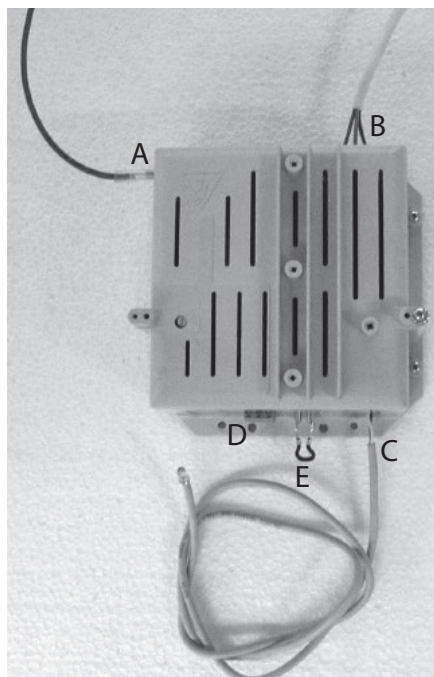


Collegare il connettore per L-N-PE.

### 3.15

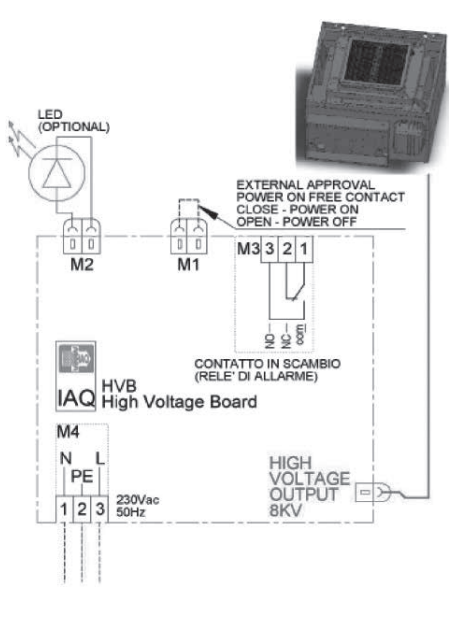


### 3.16



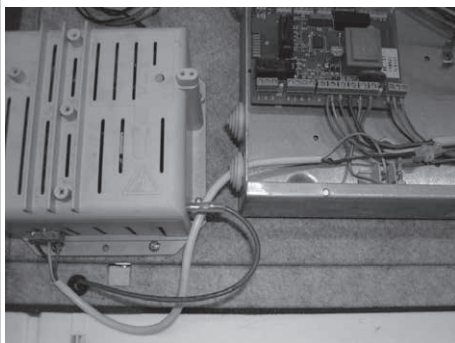
- A Cavo alta tensione - faston 6,3 con isolamento esterno in silicone.  
 B Morsetteria di alimentazione 230 Volt L-N-PE.  
 C Connettore di collegamento LED verde di segnalazione funzionamento filtro (collegamento opzionale).  
 D Morsetteria relè di allarme filtro sporco. Contatto pulito in scambio remotizzabile.  
 E Contatto ON-OFF.

### 3.17



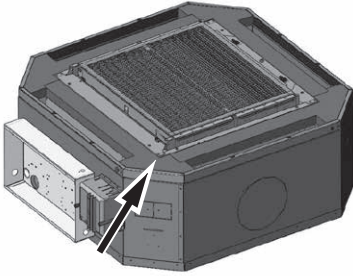
Collegamento cavi all'apparecchiatura.

### 3.18

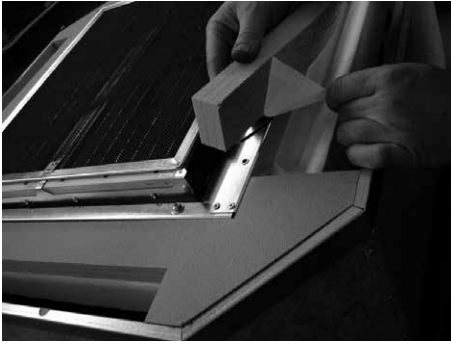


Applicare n° 4 tamponi autoadesivi attorno al telaio filtro.

**3.19**

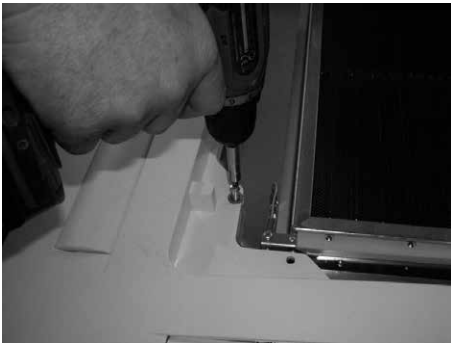


**3.20**





Fissare la plafoniera con le 4 viti M5x35 mm (incluse con la plafoniera).


**3.21**



Etichetta dati CE filtro elettrostatico da applicare congiuntamente all'etichetta dati CE ventilatore.

**3.22**

			
FANCOIL <b>CASSETTE</b> VERSION		ELECTROSTATIC FILTER	
MODEL		+ MODEL - CRY	
CODE <b>0000000</b>		+ MAX ELECTROSTATIC FILTER POWER INPUT <b>10 Watt</b>	
GRANDEZZA SIZE <b>3</b>	TUBI PIPES <b>2</b>	<b>10 Watt</b> 230Vac 50Hz	
MAX MOTOR FAN POWER INPUT <b>102,5 Watt</b>		QUALITY CONTROL	
DATE <b>20-08-2020</b>	MADE IN EU	230V 50/60Hz	QUALITY CONTROL



CCC 405386

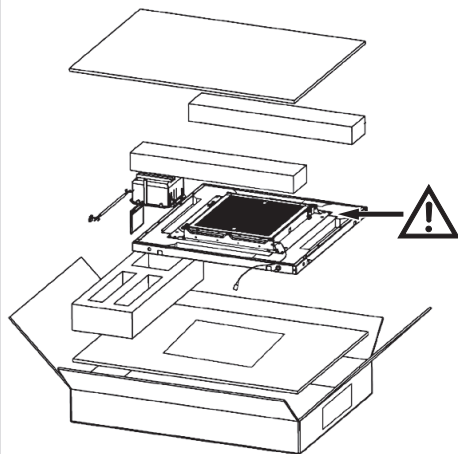
1	Introduction	18
2	Cassette 600 - Cod. 9079295	18
3	Cassette 800 - Cod. 9079296	24

## 1 INTRODUCTION

**!** THIS MANUAL SHOULD BE CONSIDERED AS AN INTEGRATION DOCUMENT TO BE USED IN CONJUNCTION WITH THE "MANUAL OF INSTRUCTIONS FOR INSTALLATION, USE AND MAINTENANCE OF ELECTROSTATIC FILTERS FOR CASSETTES" Code 4051342-.

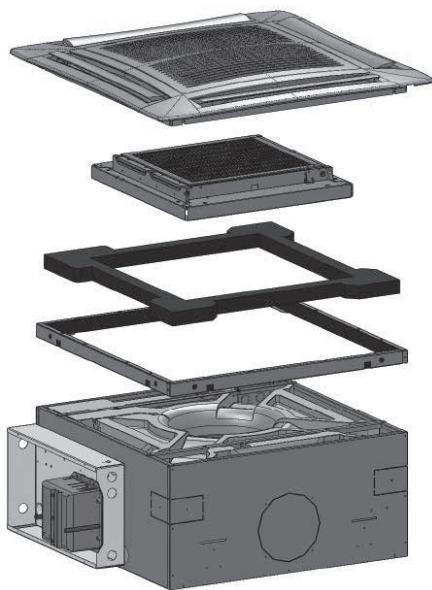
## 2 CASSETTE 600 - COD. 9079295

### 2.1



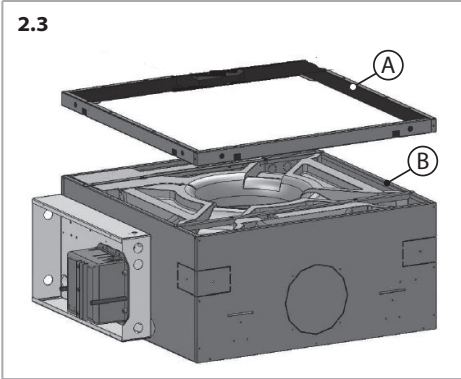
**!** The 4 polyethylene sealing foams are part of the filter and are not to be thrown away.

### 2.2

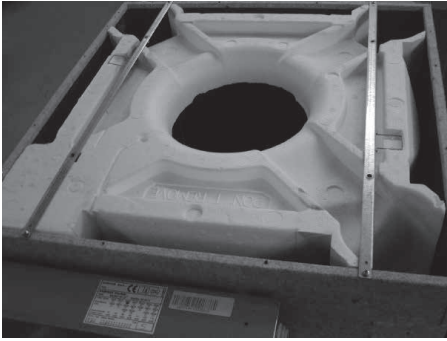


Apply the frame "A" to the unit "B".

2.3

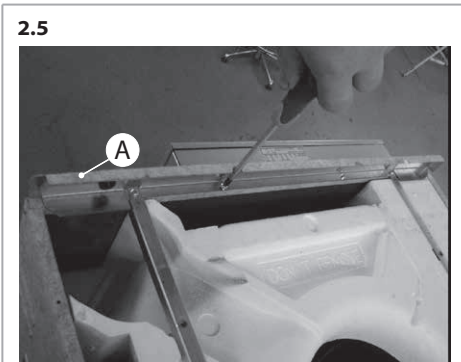


2.4 Unit "B"



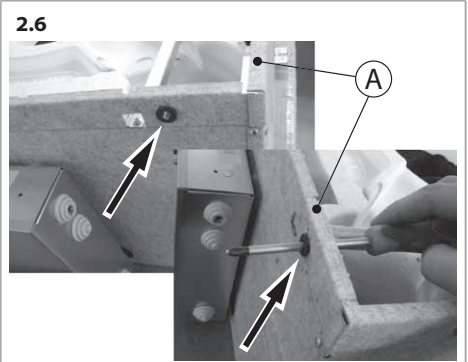
Fix the frame "A" with the 8 screws 3,9 x 9,5 mm (included).

2.5



Fit the cable clamp for high-voltage cable (included) on the electrical equipment side.

2.6



A = Frame

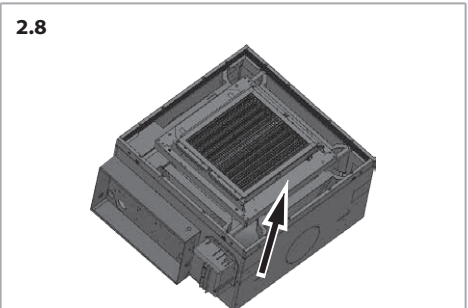
Apply the self-adhesive insulation on the 4 sides of the bearing frame.

2.7

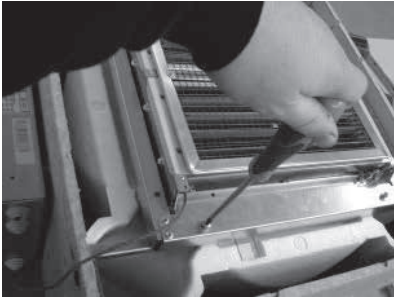


Position the filter frame with the rotation hinge on the side shown in fig. 2.8.

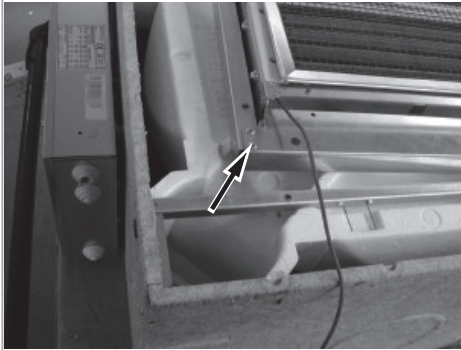
2.8



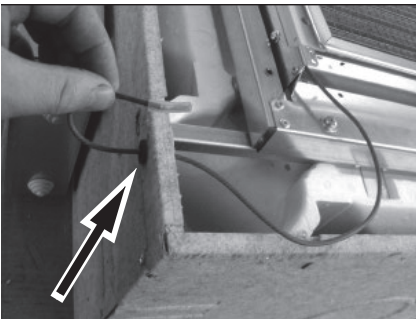
Fix the filter with the 4 screws M 5 x 35 mm (included).

**2.9**

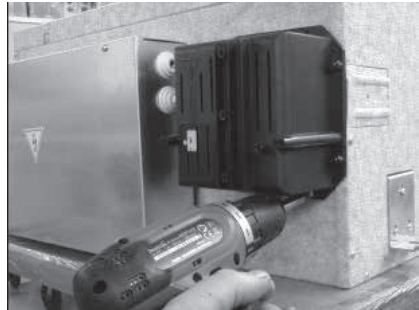
Position of the filter with the high-voltage cable towards the electrical equipment.

**2.10**

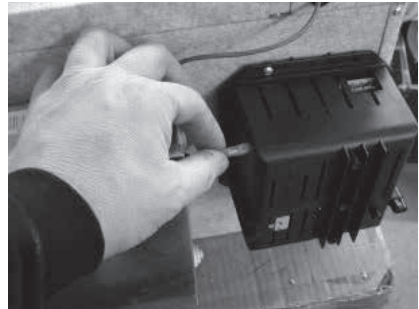
Put the high-voltage cable through the cable clamp on the electrical equipment side.

**2.11**

Fix the high voltage device with the 3 self-drilling screws 3,9 x 13 mm (included).

**2.12****2.13**

Connect the high voltage cable.

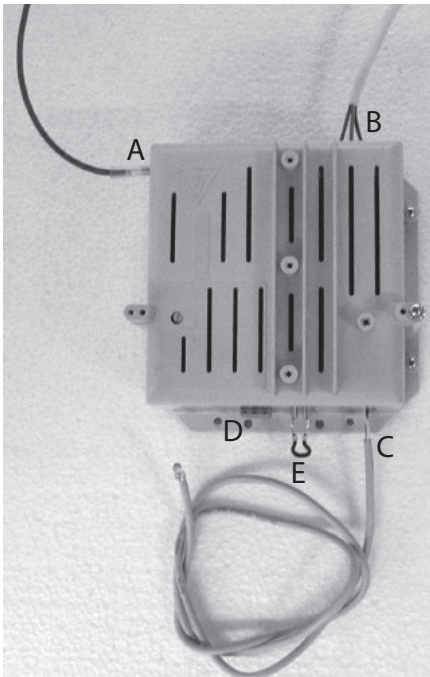
**2.14**

Connect the plug connector for L-N-PE.

2.15

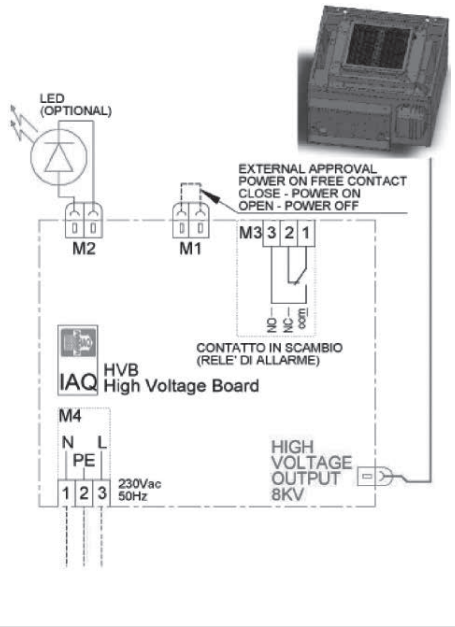


2.16



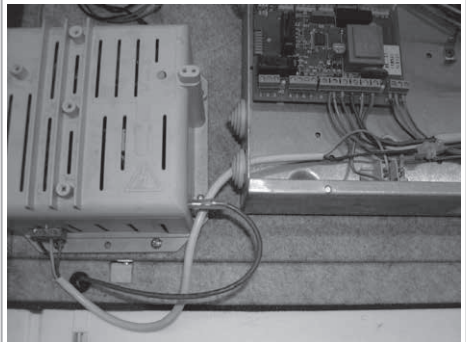
- A High voltage cable - FASTON terminal 6.3 with external silicone insulation.
- B Power supply terminal board 230 Volt L-N-PE.
- C Connection connector green LED indicator for filter operation (optional connection).
- D Dirty filter alarm relay terminal board. Clean remotely-controlled changeover contact.
- E ON-OFF contact.

2.17

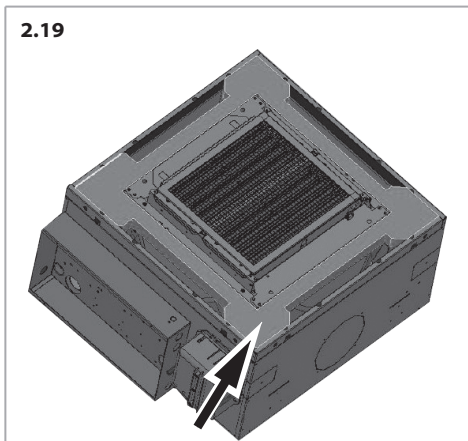
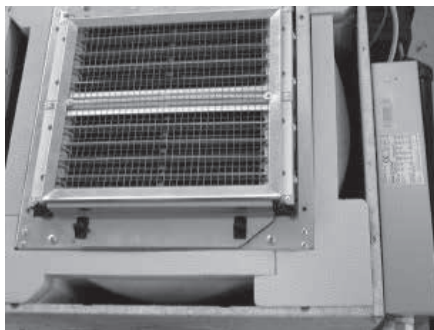


Cabling connection to the device.

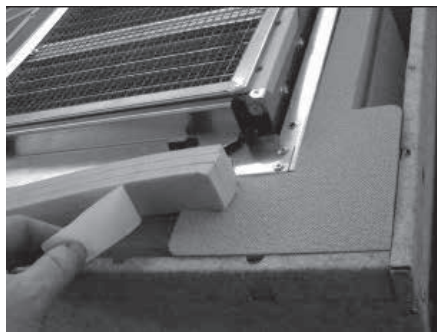
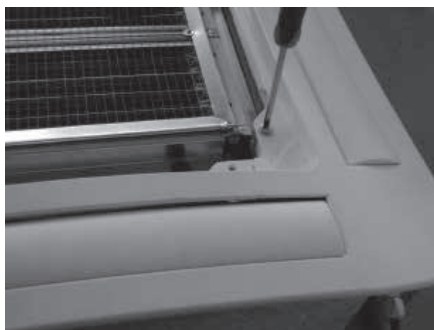
2.18



Apply 4 self-adhesive sealing foams around the filter bearing frame.



**2.19****2.21**


Fix the diffuser with the 4 screws M 5 x 35 mm (included with the diffuser).

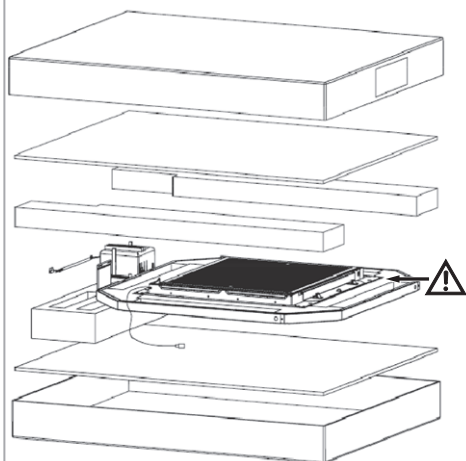
**2.20****2.22**


Electrostatic filter CE label application form in conjunction with the fan coil CE label.

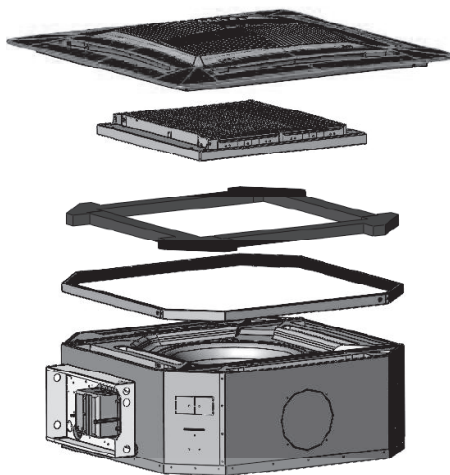
2.23

	
FANCOIL <b>CASSETTE</b> VERSION MODEL CODE <b>0000000</b> GRANDEZZA SIZE <b>3</b> TUBI PIPES <b>2</b> MAX MOTOR FAN POWER INPUT <b>102,5 Watt</b>	ELECTROSTATIC FILTER + MODEL <b>- CRY</b> + MAX ELECTROSTATIC FILTER POWER INPUT <b>10 Watt</b> <b>230Vac 50Hz</b>
DATE <b>20-08-2020</b> MADE IN EU 230V 50/60Hz <span style="border: 1px solid black; padding: 2px;">QUALITY CONTROL</span>	<span style="border: 1px solid black; padding: 2px;">QUALITY CONTROL</span> <small>COM 403386</small>

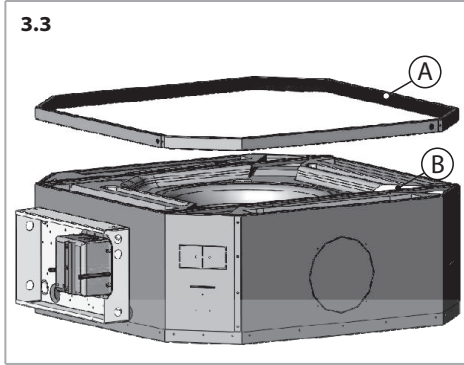


**3 CASSETTE 800 - COD. 9079296****3.1**

 The 4 polyethylene sealing foams are part of the filter and are not to be thrown away.

**3.2**

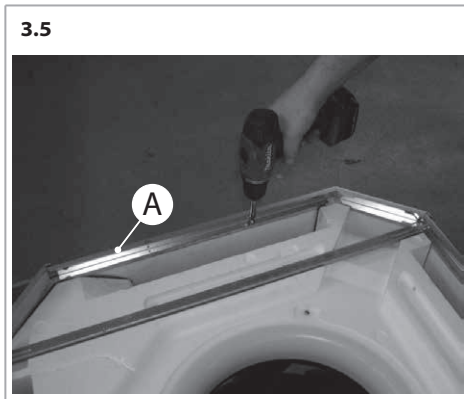
Apply the frame "A" to the unit "B".



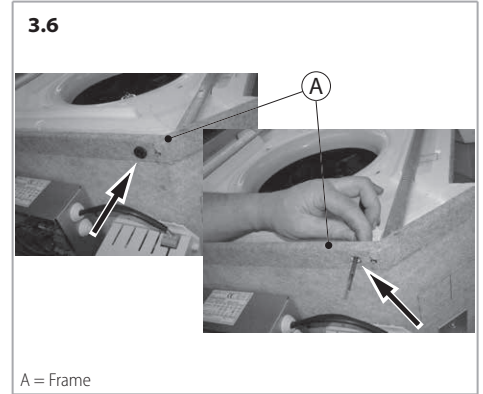
**3.4 Unit "B"**



Fix the frame "A" with the 8 screws 3,9 x 9,5 mm (included).



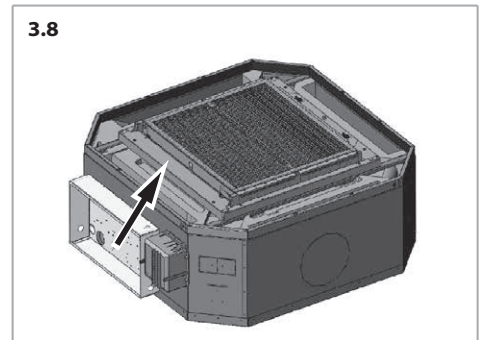
Fit the cable clamp for high-voltage cable (included) on the electrical equipment side.



Apply the self-adhesive insulation on the 4 sides of the bearing frame.



Position the filter frame with the rotation hinge on the side shown in fig. 3.8.

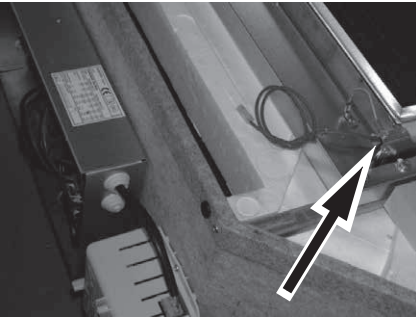


Fix the filter with the 4 screws M 5 x 35 mm (included).

**3.9**

Position of the filter with the high-voltage cable towards the electrical equipment.

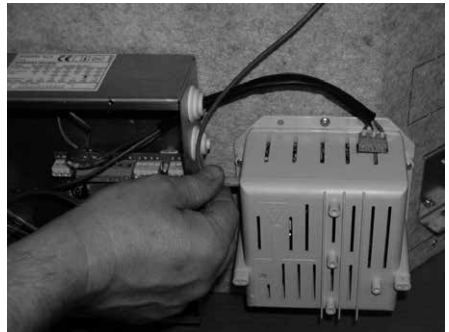
Fix the high voltage device with the 3 self-drilling screws 3,9 x 13 mm (included).

**3.12****3.10**

Put the high-voltage cable through the cable clamp on the electrical equipment side.

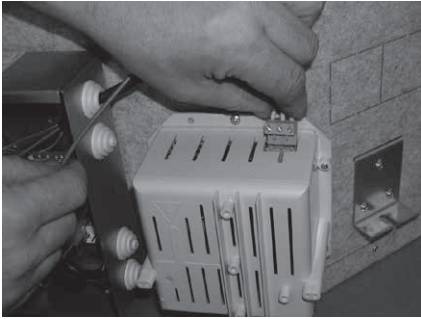
**3.13**

Connect the high voltage cable.

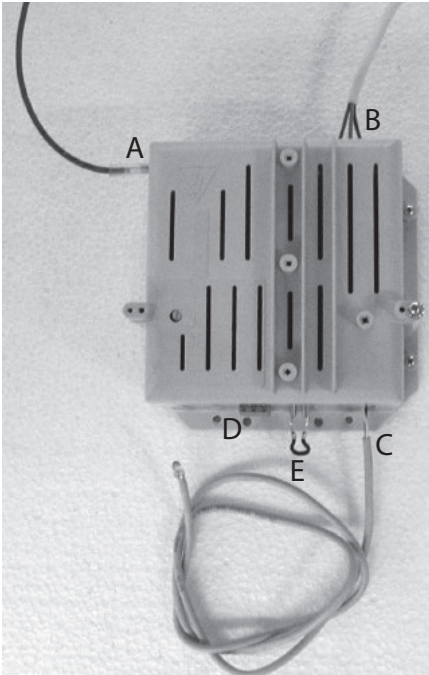
**3.11****3.14**

Connect the plug connector for L-N-PE.

3.15

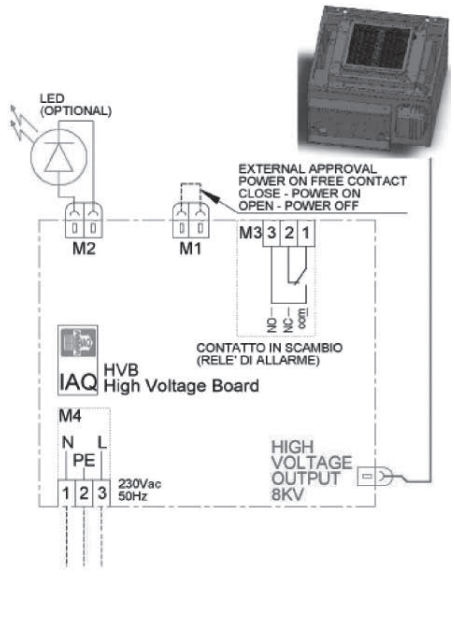


3.16



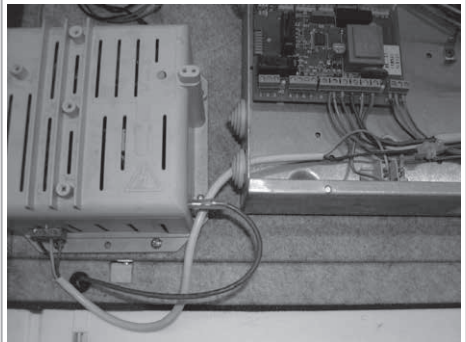
- A High voltage cable - FASTON terminal 6.3 with external silicone insulation.
- B Power supply terminal board 230 Volt L-N-PE.
- C Connection connector green LED indicator for filter operation (optional connection).
- D Dirty filter alarm relay terminal board. Clean remotely-controlled changeover contact.
- E ON-OFF contact.

3.17

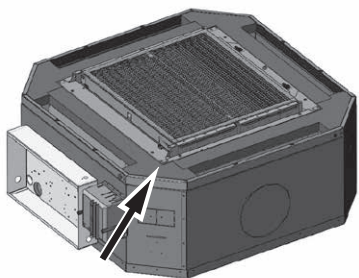
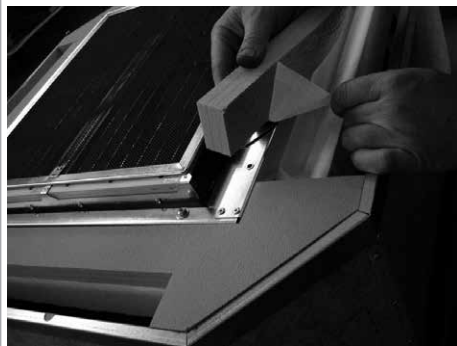


Cabling connection to the device.

3.18



Apply 4 self-adhesive sealing foams around the filter bearing frame.



**3.19****3.20**


Fix the diffuser with the 4 screws M 5 x 35 mm (included with the diffuser).

**3.21**

Electrostatic filter CE label application form in conjunction with the fan coil CE label.


3.22

	
<p>FANCOIL <b>CASSETTE</b> VERSION</p> <hr/> <p>MODEL</p> <p>CODE <b>0000000</b></p> <p>GRANDEZZA SIZE <b>3</b> TUBI PIPES <b>2</b></p> <p>MAX MOTOR FAN POWER INPUT <b>102,5 Watt</b></p>	<p>ELECTROSTATIC FILTER</p> <p>+ MODEL <b>- CRY</b></p> <p>+ MAX ELECTROSTATIC FILTER POWER INPUT <b>10 Watt</b> <b>230Vac 50Hz</b></p>
<p>DATE <b>20-08-2020</b> MADE IN EU <b>230V 50/60Hz</b> <span style="border: 1px solid black; padding: 2px;">QUALITY CONTROL</span></p>	<p><span style="border: 1px solid black; padding: 2px;">QUALITY CONTROL</span> <small>COM-403386</small></p>



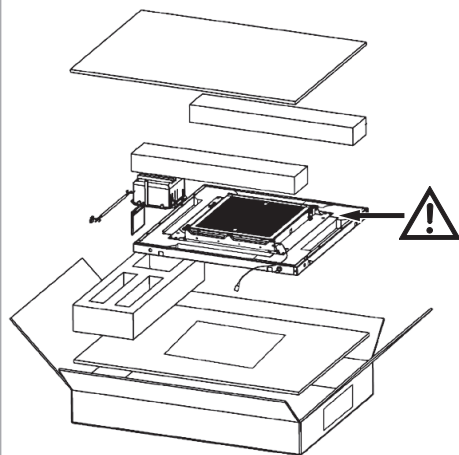
1	Introduction	31
2	Cassette 600 - Cod. 9079295	31
3	Cassette 800 - Cod. 9079296	37

## 1 INTRODUCTION

 LE PRÉSENT MANUEL DOIT ÊTRE CONSIDÉRÉ COMME DOCUMENT D'INTÉGRATION À UTILISER AVEC LE « MANUEL D'INSTALLATION, UTILISATION ET MAINTENANCE DU FILTRE ÉLECTROSTATIQUE POUR CASSETTES » code 4051342-.

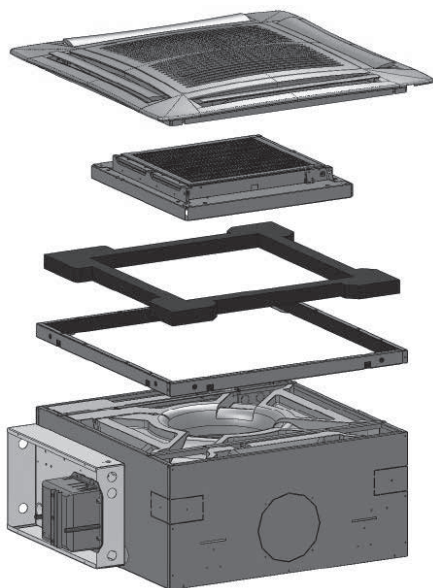
## 2 CASSETTE 600 - COD. 9079295

2.1

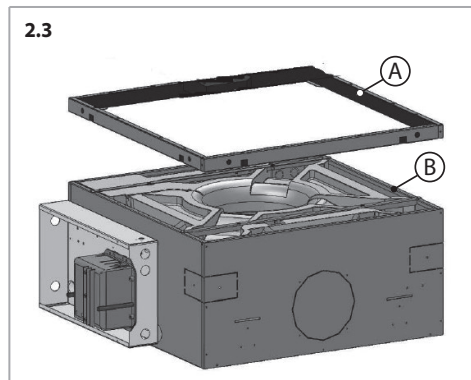


 Les 4 tampons en polyéthylène font partie du filtre et ne sont pas à jeter.

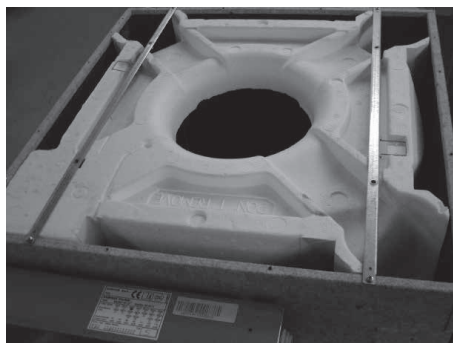
2.2



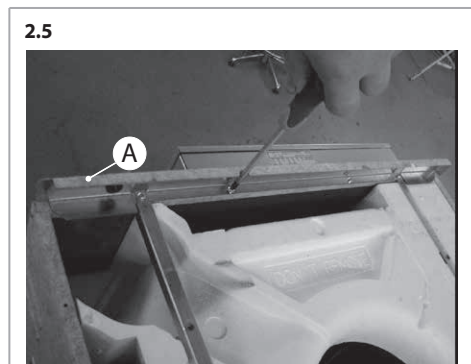
Appliquer le châssis "A" à l'unité "B".



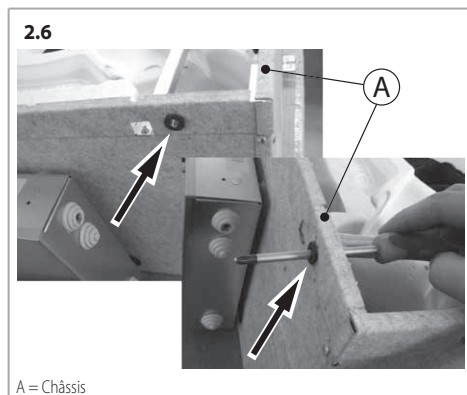
**2.4 Unité "B"**



Fixer le châssis "A" avec les 8 vis 3,9 x 9,5 mm (incluses).



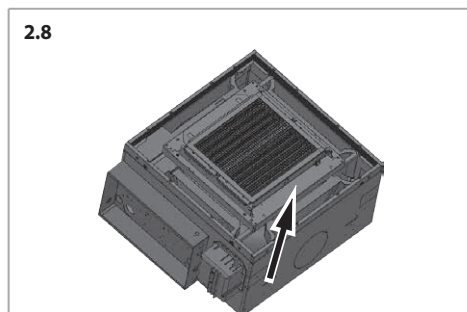
Appliquer le passe-câble pour câble de haute tension (inclus) sur le côté appareil électrique.



Appliquer l'isolation autocollante sur les 4 côtés du châssis.



Positionner le châssis avec la charnière de rotation placée sur le côté indiqué sur la fig.2.8.



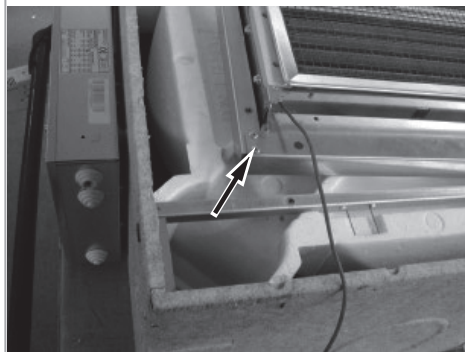
Fixer le filtre avec les 4 vis M 5 x 35 mm (incluses).

**2.9**



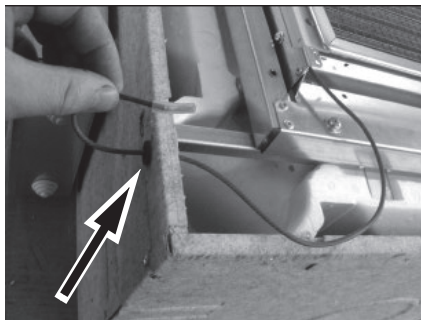
Position du filtre avec le câble de haute tension vers l'appareil électrique.

**2.10**



Faire passer le câble de haute tension du passe-câble côté appareil électrique.

**2.11**

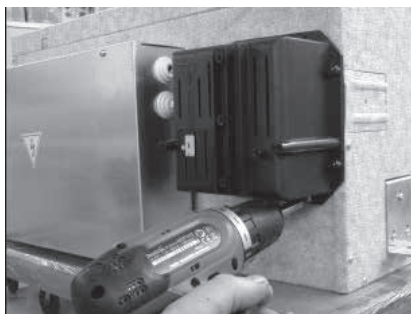


Fixer le dispositif haute tension avec les 3 vis autoperceuses 3,9 x 13 mm (incluses).

**2.12**

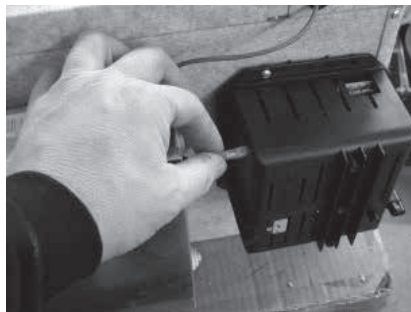


**2.13**



Brancher le câble haute tension.

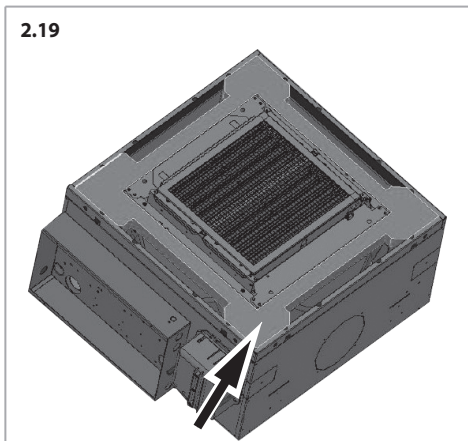
**2.14**



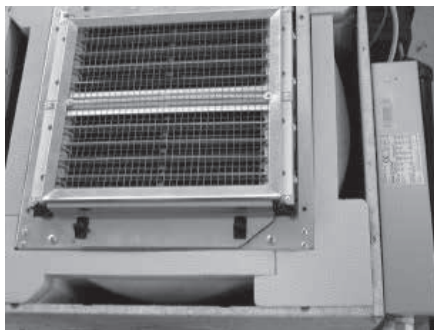


Appliquer 4 tampons autocollants autour du châssis du filtre.

2.19

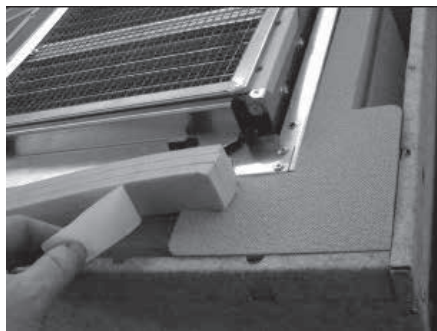


2.21

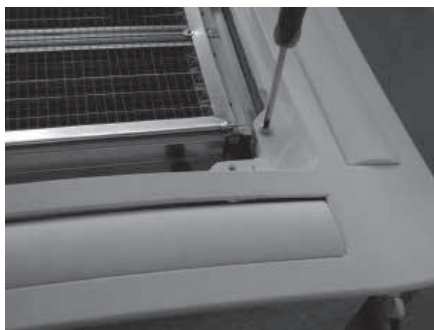


Fixer le diffuseur avec les 4 vis M 5 x 35 mm (incluses avec le diffuseur).

2.20






2.22



Étiquette de données CE filtre électrostatique à appliquer avec l'étiquette de données CE ventilateur.

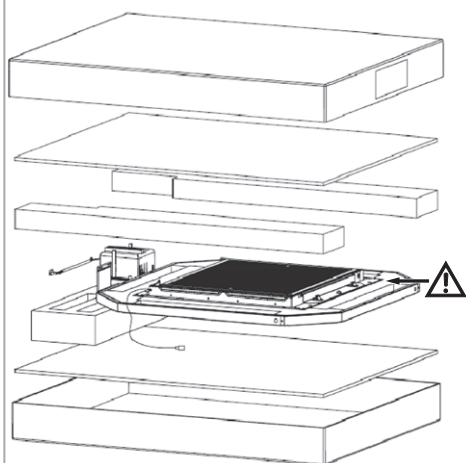
2.23

	
FANCOIL <b>CASSETTE</b> VERSION MODEL CODE <b>0000000</b> GRANDEZZA SIZE <b>3</b> TUBI PIPES <b>2</b> MAX MOTOR FAN POWER INPUT <b>102,5 Watt</b>	ELECTROSTATIC FILTER + MODEL <b>- CRY</b>  + MAX ELECTROSTATIC FILTER POWER INPUT <b>10 Watt</b> <b>230Vac 50Hz</b>
DATE DATE <b>20-08-2020</b> MADE IN EU 230V 50/60Hz <span style="border: 1px solid black; padding: 2px;">QUALITY CONTROL</span>	<span style="border: 1px solid black; padding: 2px;">QUALITY CONTROL</span>



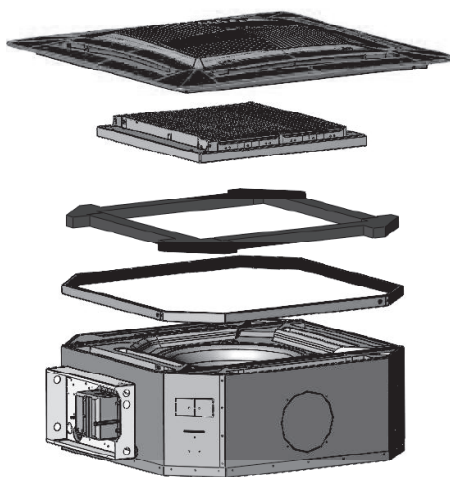
### 3 CASSETTE 800 - COD. 9079296

3.1

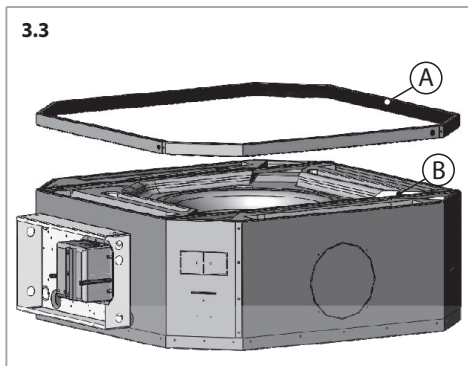


 Les 4 tampons en polyéthylène font partie du filtre et ne sont pas à jeter.

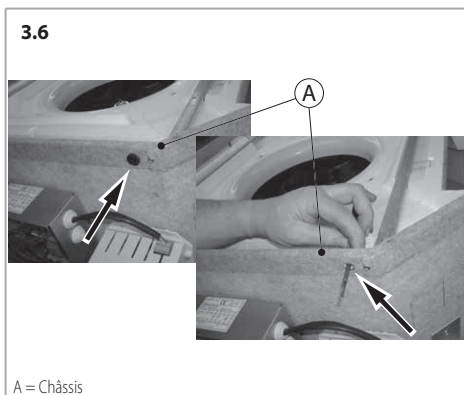
3.2



Appliquer le châssis "A" à l'unité "B".



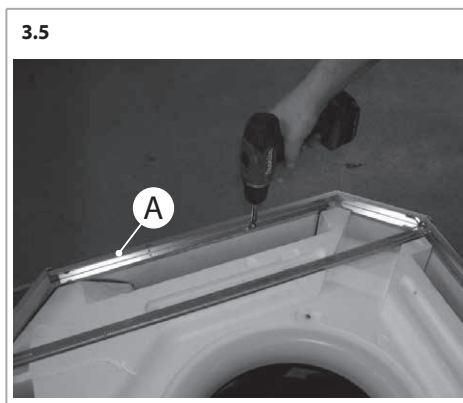
Appliquer le passe-câble pour câble de haute tension (inclus) sur le côté appareil électrique.



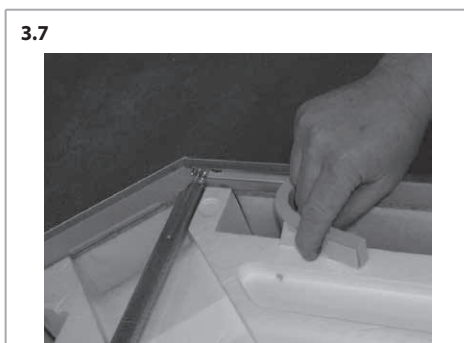
**3.4 Unité "B"**



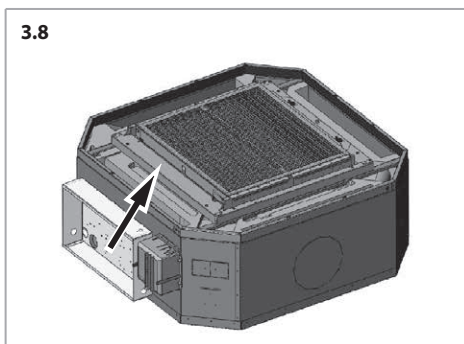
Fixer le châssis "A" avec les 8 vis 3,9 x 9,5 mm (incluses).



Appliquer l'isolation autocollante sur les 4 côtés du châssis.



Positionner le châssis avec la charnière de rotation placée sur le côté indiqué sur la fig.3.8.



Fixer le filtre avec les 4 vis M 5 x 35 mm (incluses).

3.9



Position du filtre avec le câble de haute tension vers l'appareil électrique.

3.12



3.10



Faire passer le câble de haute tension du passe-câble côté appareil électrique.

3.13



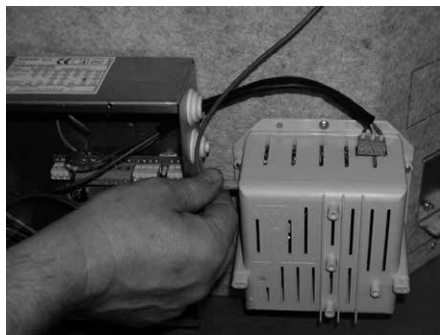
Brancher le câble haute tension.

3.11



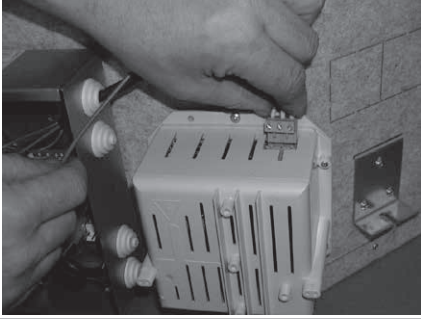
Fixer le dispositif haute tension avec les 3 vis autoperceuses 3,9 x 13 mm (incluses).

3.14

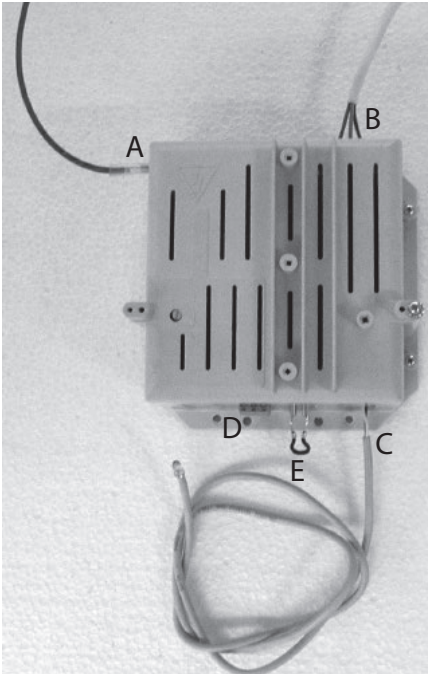


Brancher le connecteur pour L-N-PE.

3.15

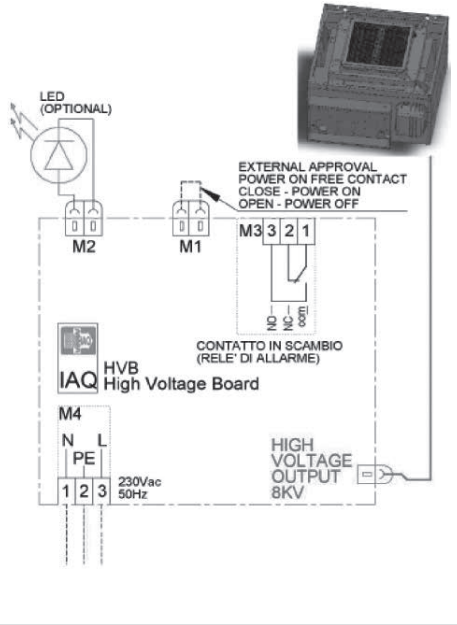


3.16



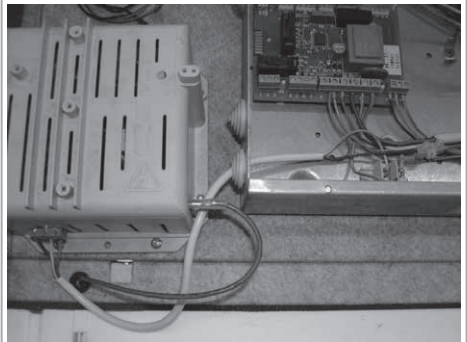
- A Câble haute tension - faston 6,3 avec isolation extérieure en silicone.
- B Boîte à bornes d'alimentation 230 volts L-N-PE.
- C Connecteur de branchement LED vert de signal fonctionnement filtre (branchement en option).
- D Boîte à bornes relais d'alarme filtre sale. Contact sec en échange à distance.
- E Contact ON-OFF.

3.17



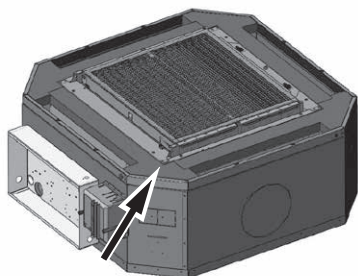
Raccordement des câbles à l'unité.

3.18

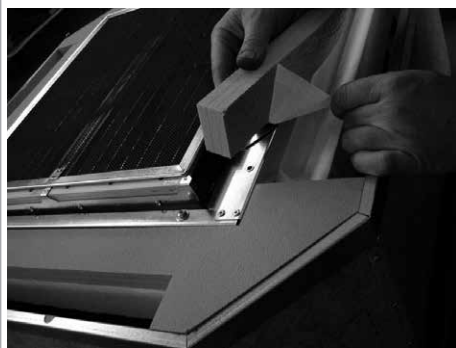


Appliquer 4 tampons autocollants autour du châssis du filtre.

**3.19**

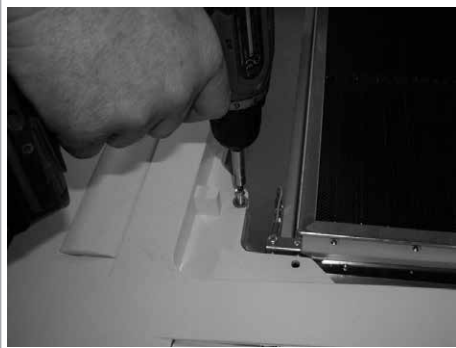


**3.20**





Fixer le diffuseur avec les 4 vis M 5 x 35 mm (incluses avec le diffuseur).


**3.21**



Étiquette de données CE filtre électrostatique à appliquer avec l'étiquette de données CE ventilateur.


3.22

	
<p>FANCOIL <b>CASSETTE</b> VERSION</p> <hr/> <p>MODEL</p> <p>CODE <b>0000000</b></p> <p>GRANDEZZA SIZE <b>3</b> TUBI PIPES <b>2</b></p> <p>MAX MOTOR FAN POWER INPUT <b>102,5 Watt</b></p>	<p>ELECTROSTATIC FILTER</p> <p>+ MODEL - <b>CRY</b></p> <p>+ MAX ELECTROSTATIC FILTER POWER INPUT <b>10 Watt</b> 230Vac 50Hz</p>
<p>DATE DATE <b>20-08-2020</b> MADE IN EU 230V 50/60Hz <span style="border: 1px solid black; padding: 2px;">QUALITY CONTROL</span></p>	<p style="text-align: right;"><span style="border: 1px solid black; padding: 2px;">QUALITY CONTROL</span> <small>COM 403386</small></p>



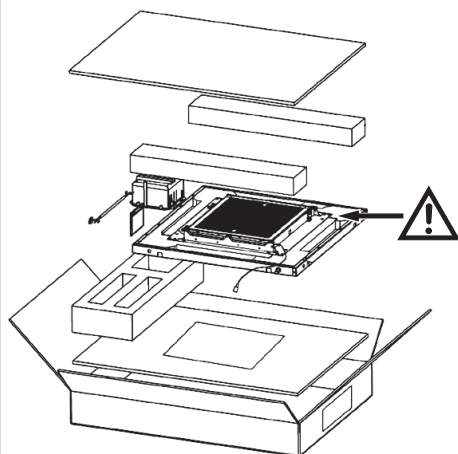
1	Einleitung	44
2	Cassette 600 - Cod. 9079295	44
3	Cassette 800 - Cod. 9079296	50

## 1 EINLEITUNG

 DIESES HANDBUCH IST EIN BESTANDTEIL DER INSTALLATIONS-, BETRIEBS- UND WARTUNGSANLEITUNG DES ELEKTROSTATISCHEN FILTERS FÜR KASSETTEN“ ART. 4051342-.

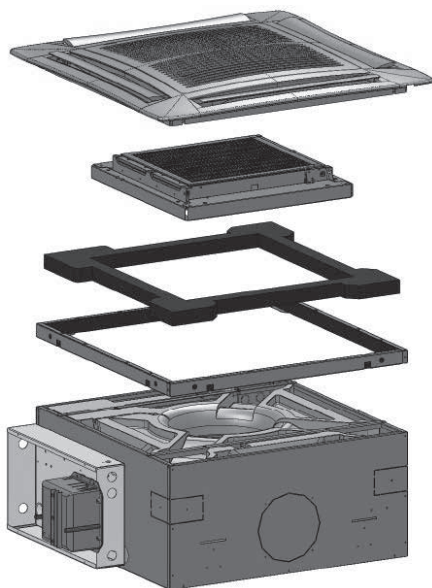
## 2 CASSETTE 600 - COD. 9079295

2.1



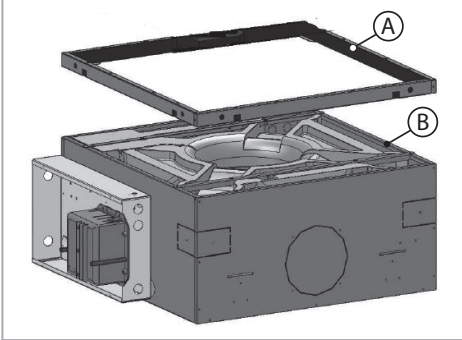
 Die 4 Polyethylenpuffer gehören zum Filter und dürfen nicht wegge-  
worfen werden.

2.2

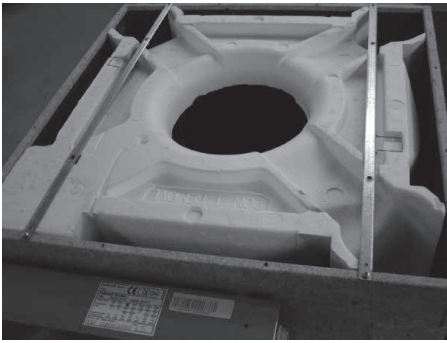


Den Rahmen „A“ an der Einheit „B“ befestigen.

2.3

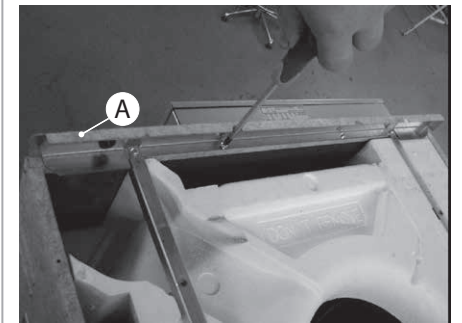


2.4 Einheit "B"



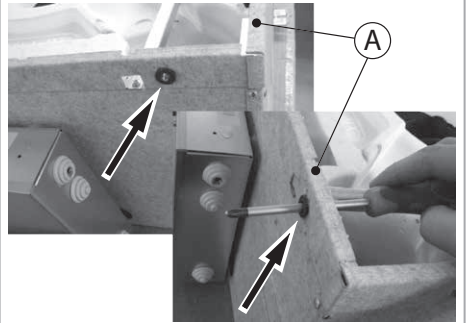
Den Rahmen „A“ mit den 8 (im Lieferumfang enthaltenen) Schrauben 3,9 x 9,5 mm befestigen.

2.5



Die Kabeldurchführung für das Hochspannungskabel (im Lieferumfang enthalten) an der Seite der elektrischen Anlage anbringen.

2.6



A = Rahmen

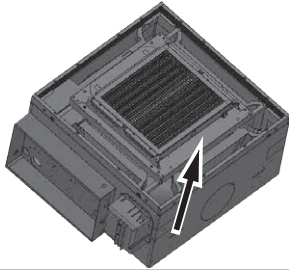
Die selbstklebende Isolierung an den 4 Seiten des Rahmens anbringen.

2.7



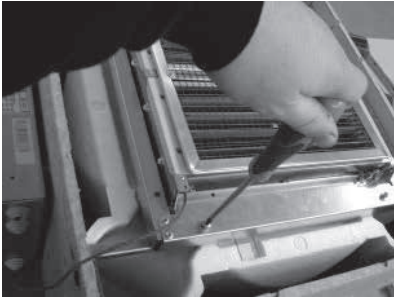
Den Filterrahmen mit dem Drehscharnier an der in Abb.2.8gezeigten Seite positionieren.

2.8



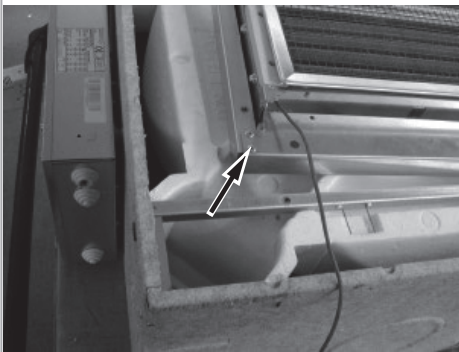
Den Filter mit den 4 (im Lieferumfang enthaltenen) Schrauben 5x35 mm befestigen.

2.9



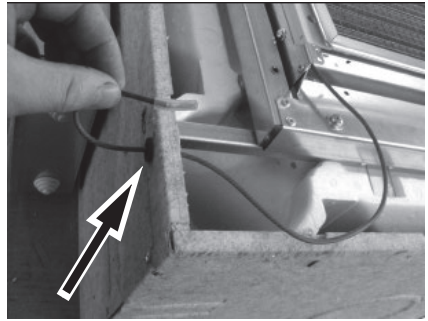
Den Filter so positionieren, dass das Hochspannungskabel zum Elektrogerät ausgerichtet ist.

2.10



Das Hochspannungskabel durch die Kabelverschraubung auf der Seite des Elektrogeräts führen

2.11

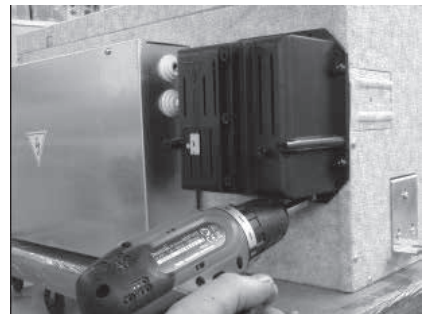


Das Hochspannungsgerät mit den 3 (im Lieferumfang enthaltenen) selbstschneidenden Schrauben 3,9x13 mm befestigen

2.12

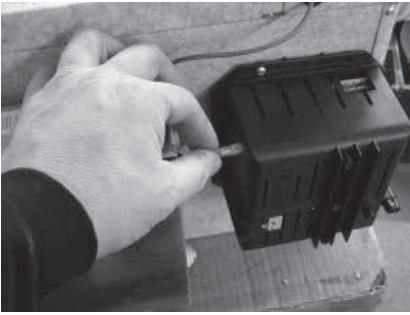


2.13



Das Hochspannungskabel anschließen.

## 2.14

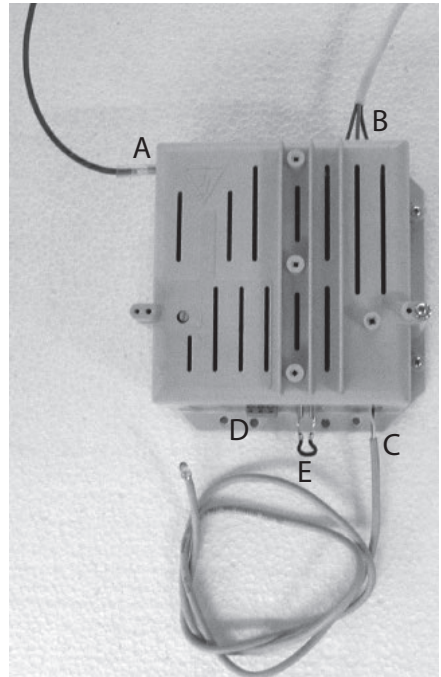


Den Stecker für L-N-PE anschließen.

## 2.15

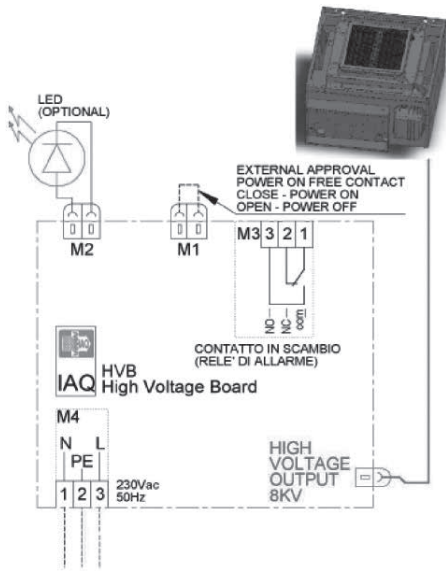


## 2.16



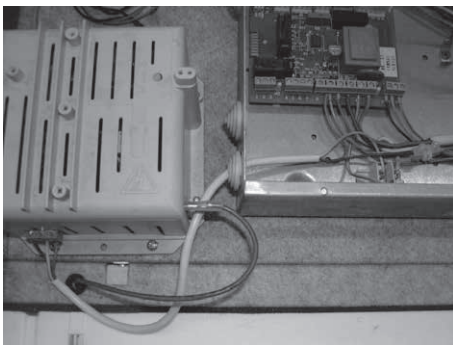
- A Hochspannungskabel - Faston 6.3 mit externer Silikonisolierung
- B Versorgungsklemmenbrett 230 Volt L-N-PE.
- C Anschlussstecker für grüne Betriebs-LED des Filters (optionaler Anschluss).
- D Klemmenbrett Alarmrelais für verschmutzten Filter. Remotisierbarer spannungsfreier Umschaltkontakt.
- E Kontakt ON-OFF.

2.17



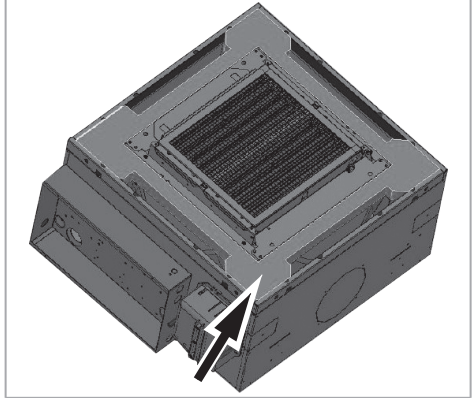
Anschluss der Kabel an das Gerät.

2.18

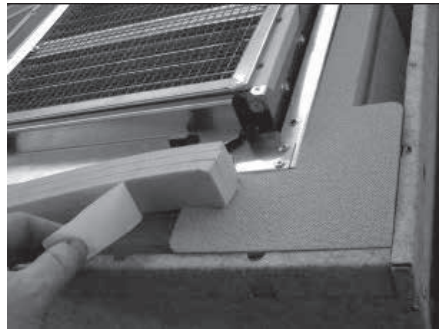


Die 4 selbstklebende Puffer um den Filter herum anbringen.

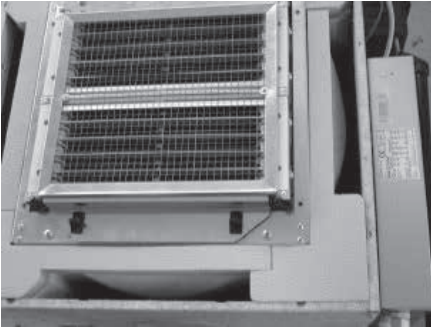
2.19



2.20

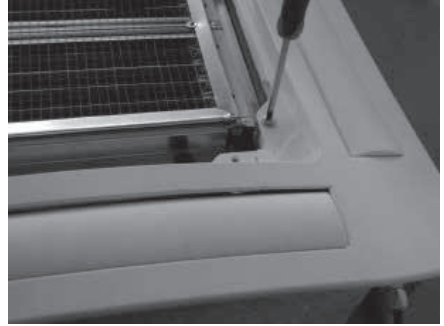


2.21










Die Deckenleuchte mit den 4 (im Lieferumfang enthaltenen) Schrauben M5x35 mm befestigen.

2.22



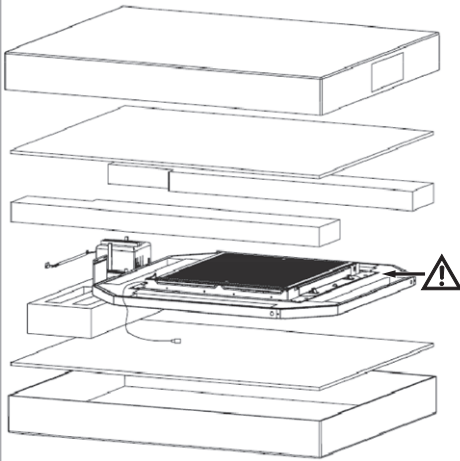
EC-Datenschild des elektrostatischen Filters, das zusammen mit dem EC-Datenschild des Ventilators angebracht werden muss.

2.23

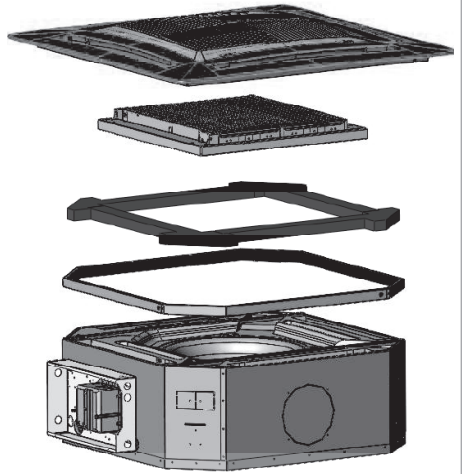
   <hr/> <p>FANCOIL <b>CASSETTE</b>      VERSION</p> <p>MODEL</p> <p>CODE      <b>0000000</b></p> <p>GRANDEZZA      3      TUBI      2          SIZE      PIPES</p> <p>MAX MOTOR FAN          POWER INPUT      <b>102,5 Watt</b></p> <p>DATE      20-08-2020      MADE IN      230V 50/60Hz      QUALITY          DATE      EU      CONTROL</p>	   <p>ELECTROSTATIC          FILTER</p> <p>+ MODEL      - CRY</p> <p>+ MAX ELECTROSTATIC          FILTER POWER      10 Watt          INPUT      230Vac 50Hz</p> <p style="text-align: right;">QUALITY          CONTROL</p> <p style="text-align: right; font-size: small;">CCC 401368</p>
	

3 CASSETTE 800 - COD. 9079296

3.1

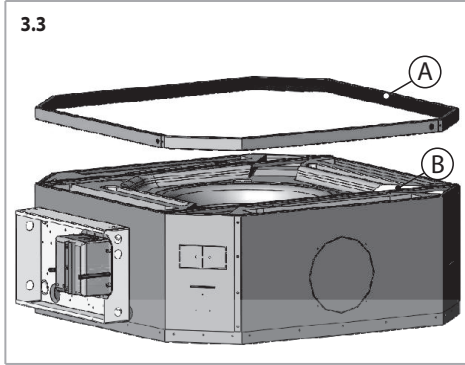


3.2



 Die 4 Polyethylenpuffer gehören zum Filter und dürfen nicht weg-  
geworfen werden.

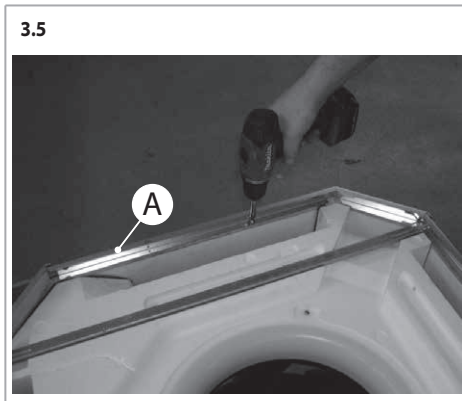
Den Rahmen „A“ an der Einheit „B“ befestigen.



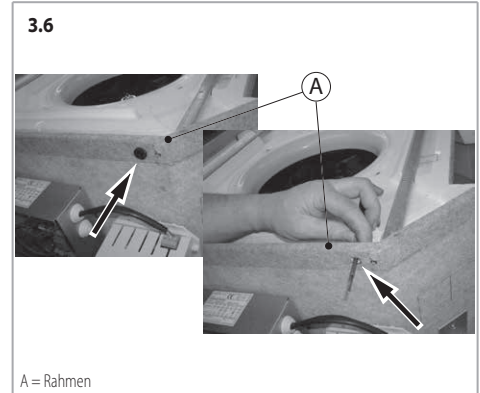
**3.4 Einheit "B"**



Den Rahmen „A“ mit den 8 (im Lieferumfang enthaltenen) Schrauben 3,9 x 9,5 mm befestigen.



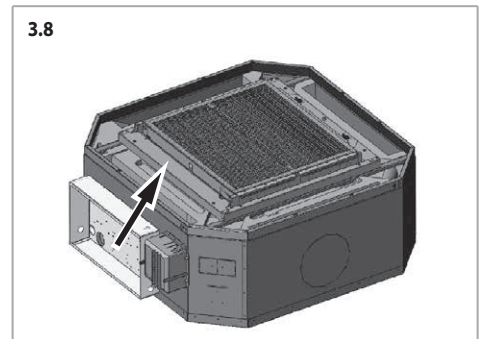
Die Kabeldurchführung für das Hochspannungskabel (im Lieferumfang enthalten) an der Seite der elektrischen Anlage anbringen.



Die selbstklebende Isolierung an den 4 Seiten des Rahmens anbringen.



Den Filterrahmen mit dem Drehscharnier an der in Abb.3.8gezeigten Seite positionieren.



Den Filter mit den 4 (im Lieferumfang enthaltenen) Schrauben 5x35 mm befestigen.

**3.9**

Den Filter so positionieren, dass das Hochspannungskabel zum Elektrogerät ausgerichtet ist.

**3.10**

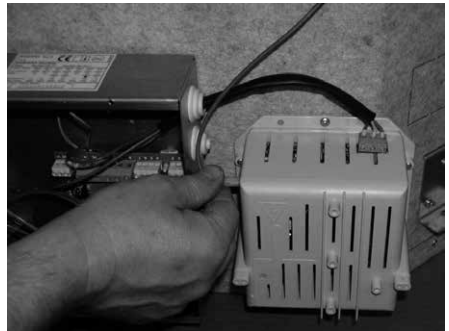
Das Hochspannungskabel durch die Kabelverschraubung auf der Seite des Elektrogeräts führen

**3.11**

Das Hochspannungsgerät mit den 3 (im Lieferumfang enthaltenen) selbstschneidenden Schrauben 3,9x13 mm befestigen

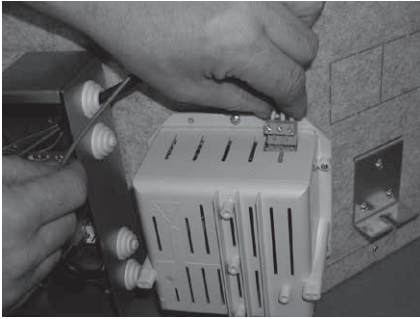
**3.12****3.13**

Das Hochspannungskabel anschließen.

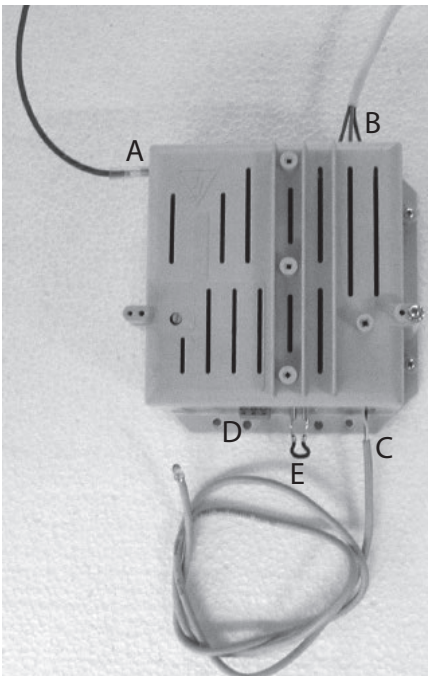
**3.14**

Den Stecker für L-N-PE anschließen.

### 3.15

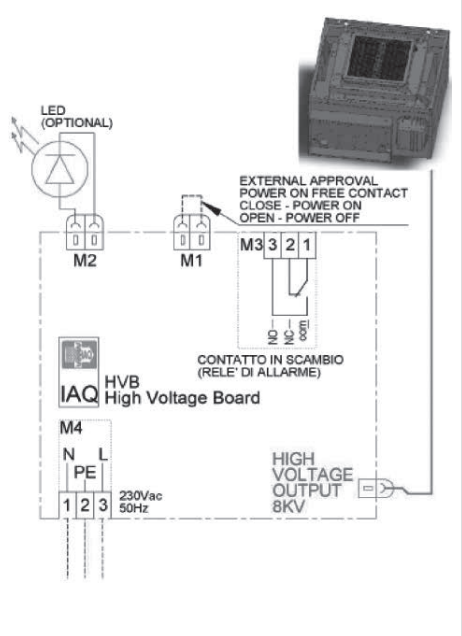


### 3.16



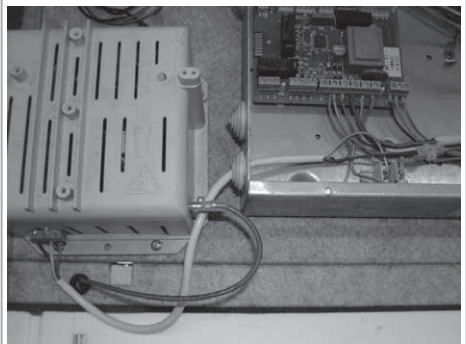
- A Hochspannungskabel - Faston 6.3 mit externer Silikonisierung
- B Versorgungsklemmenbrett 230 Volt L-N-PE.
- C Anschlussstecker für grüne Betriebs-LED des Filters (optionaler Anschluss).
- D Klemmenbrett Alarmrelais für verschmutzten Filter, Remotisierbarer spannungsfreier Umschaltkontakt.
- E Kontakt ON-OFF.

### 3.17



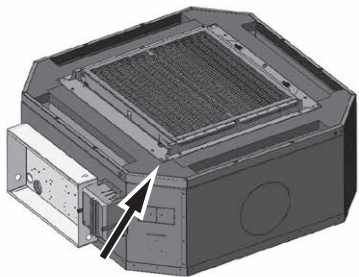
Anschluss der Kabel an das Gerät.

### 3.18



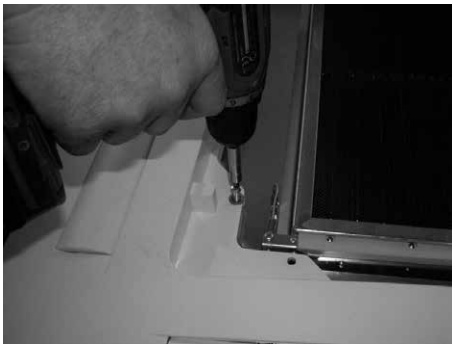
Die 4 selbstklebende Puffer um den Filter herum anbringen.

3.19

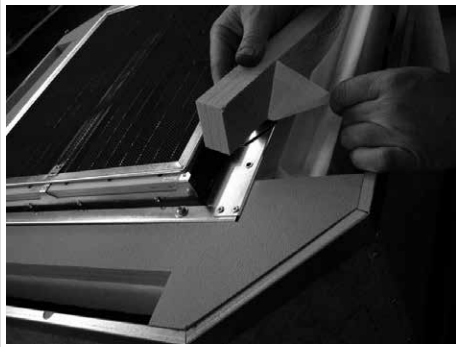


Die Deckenleuchte mit den 4 (im Lieferumfang enthaltenen) Schrauben M5x35 mm befestigen.

3.21







3.20



EC-Datenschild des elektrostatischen Filters, das zusammen mit dem EC-Datenschild des Ventilators angebracht werden muss.

3.22

	
FANCOIL <b>CASSETTE</b> VERSION MODEL CODE <b>0000000</b> GRANDEZZA <b>3</b> TUBI <b>2</b> SIZE PIPES MAX MOTOR FAN <b>102,5 Watt</b> POWER INPUT	ELECTROSTATIC FILTER + MODEL <b>- CRY</b> + MAX ELECTROSTATIC FILTER POWER INPUT <b>10 Watt</b> <b>230Vac 50Hz</b>
DATE <b>20-08-2020</b> MADE IN EU 230V 50/60Hz 	



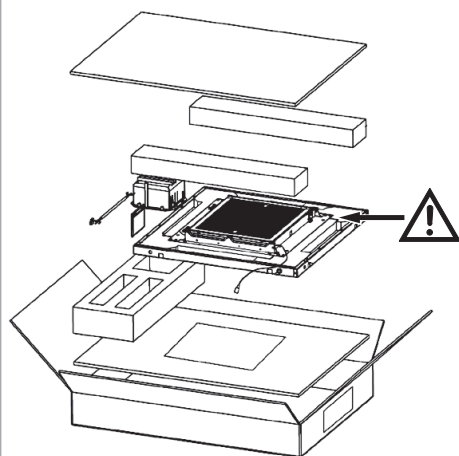
1	Introducción	56
2	Cassette 600 - Cod. 9079295	56
3	Cassette 800 - Cod. 9079296	62

## 1 INTRODUCCIÓN

**!** ESTE MANUAL DEBE CONSIDERARSE UN DOCUMENTO ADICIONAL PARA UTILIZAR CON EL "MANUAL DE INSTRUCCIONES DE INSTALACIÓN, USO Y MANTENIMIENTO DEL FILTRO ELECTROSTÁTICO PARA CASSETTE" (cód. 4051342-).

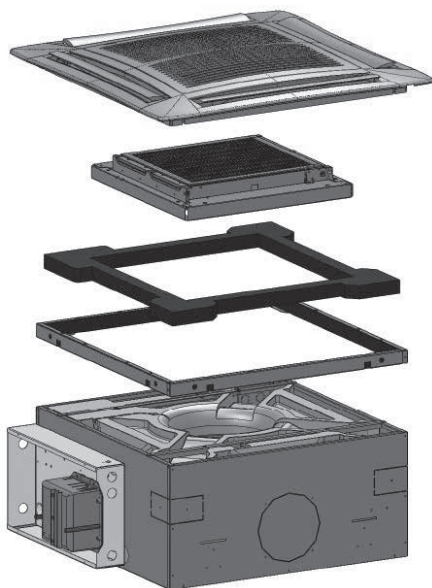
## 2 CASSETTE 600 - COD. 9079295

2.1



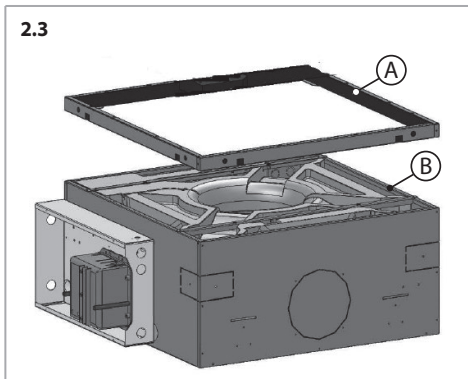
**!** Los 4 tapones de polietileno forman parte del filtro y no deben tirarse.

2.2



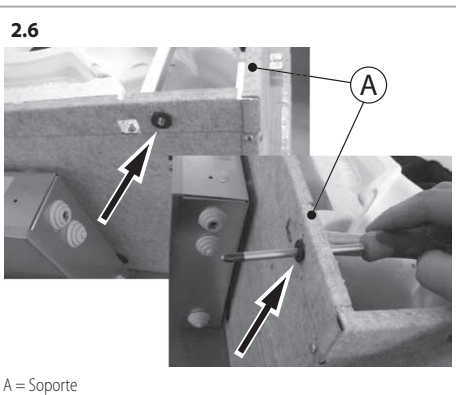
Aplicar el soporte "A" a la unidad "B".

2.3



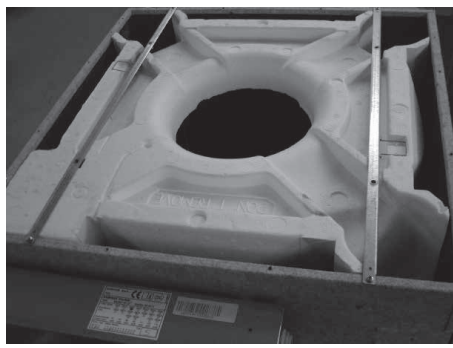
Situar el pasacables para cable de alta tensión (incluido) en el lado del aparato eléctrico.

2.6



A = Soporte

2.4 Unidad "B"



Fijar el soporte "A" con los 8 tornillos de 3,9 x 9,5 mm (incluidos).

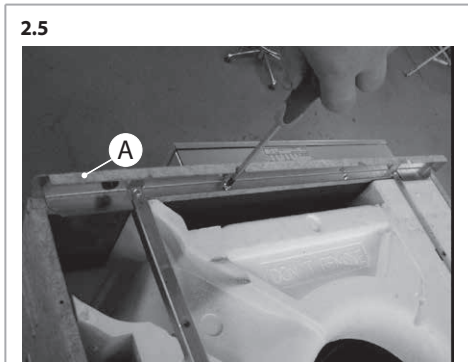
Aplicar el aislante autoadhesivo a los 4 lados del soporte.

2.7

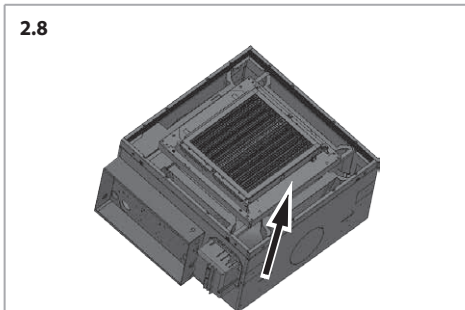


Colocar el soporte del filtro con la bisagra de rotación en el lado indicado en la figura 2.8.

2.5



2.8



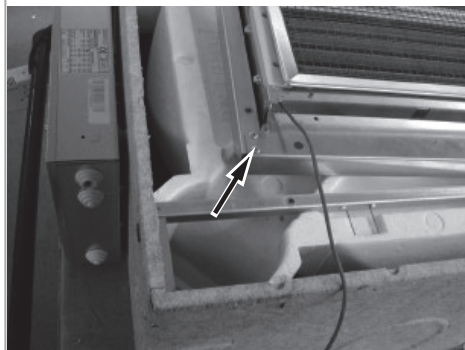
Fijar el filtro con los 4 tornillos M 5x35 mm (incluidos).

**2.9**



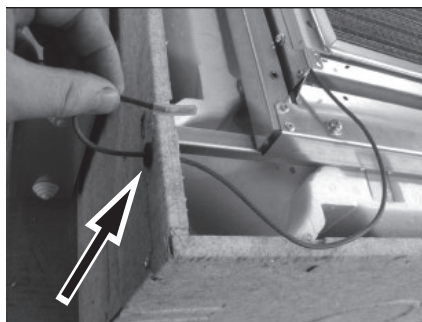
Colocar el filtro con el cable de alta tensión hacia el aparato eléctrico.

**2.10**



Passar el cable de alta tensión por el pasacables del lado del aparato eléctrico.

**2.11**

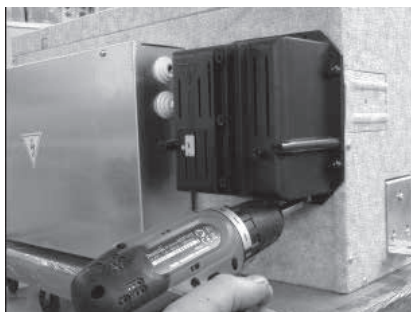


Fija el aparato de alta tensión con los 3 tornillos autopercorantes de 3,9x13 mm (incluidos).

**2.12**

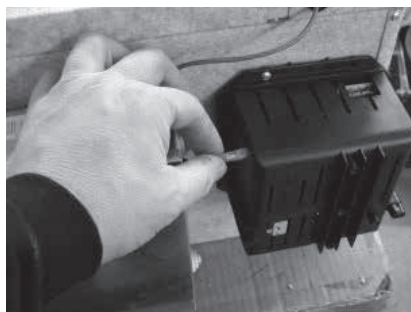


**2.13**



Conectar el cable de alta tensión.

**2.14**

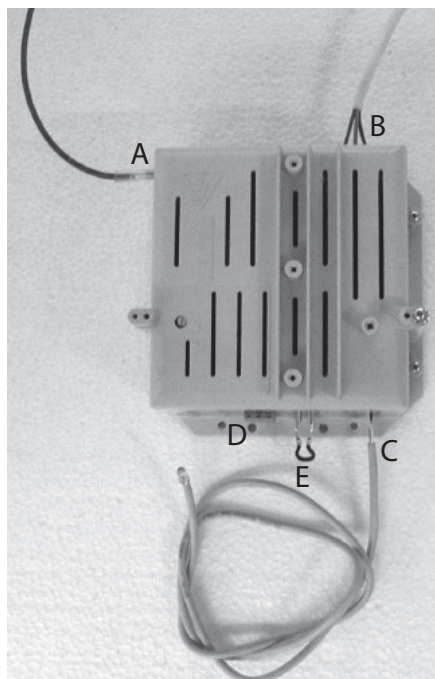


Conectar el conector para L-N-PE.

2.15

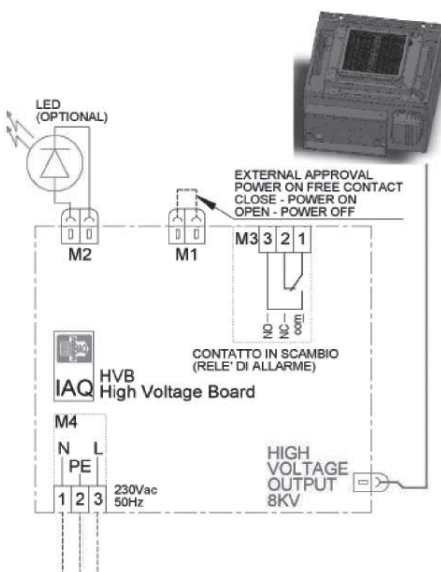


2.16



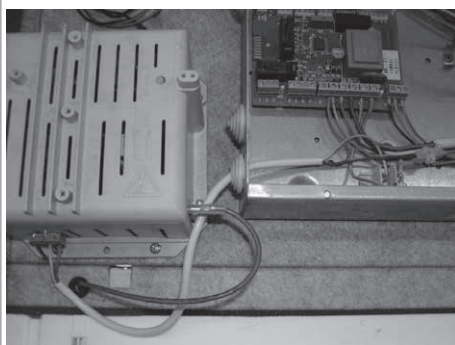
- A Cable de alta tensión - faston 6,3 con aislamiento externo de silicona
- B Tablero de bornes de alimentación de 230 V L-N-PE.
- C Conector de conexión de LED verde de señalización de funcionamiento del filtro (conexión opcional)
- D Tablero de bornes del relé de alarma de filtro sucio. Contacto de conmutación sin tensión remotizable.
- E Contacto ON-OFF.

2.17

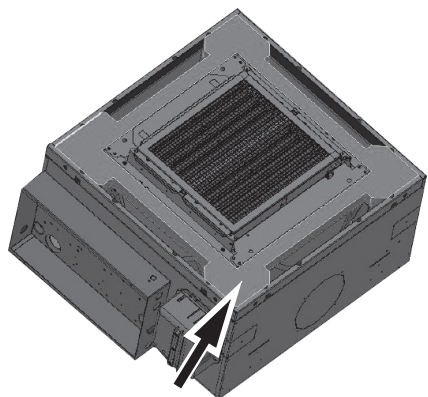
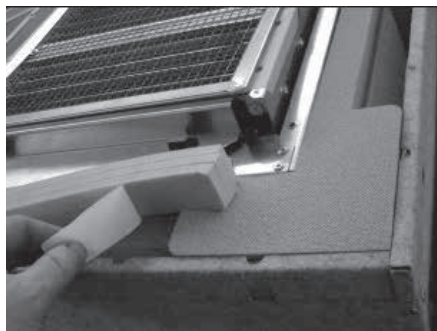
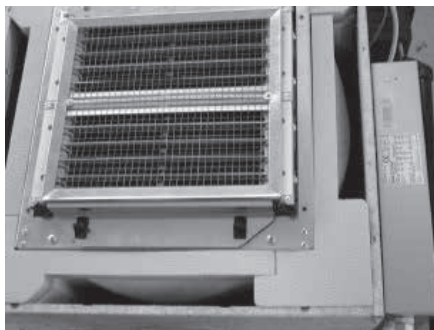


Conexión de los cables al aparato.

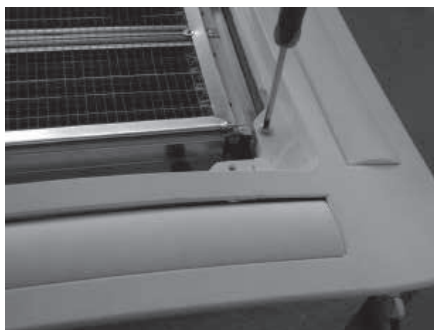
2.18



Aplicar 4 tapones autoadhesivos alrededor del soporte del filtro.



**2.19****2.20****2.21**


Fijar el aplique con los 4 tornillos M5x35 mm (incluidos con el aplique).

**2.22**

Etiqueta de datos CE del filtro electrostático para utilizar con la etiqueta de datos CE del ventilador.

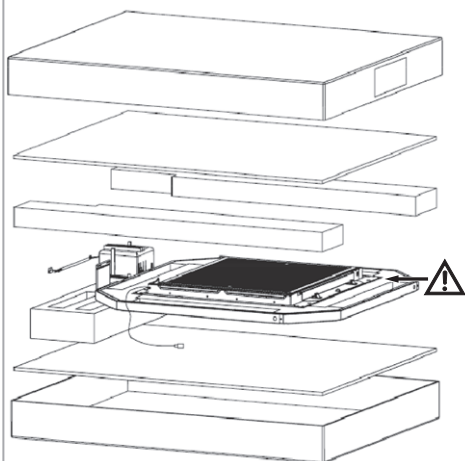
2.23

	
<p>FANCOIL <b>CASSETTE</b> VERSION</p> <hr/> <p>MODEL</p> <p>CODE <b>0000000</b></p> <p>GRANDEZZA SIZE <b>3</b> TUBI PIPES <b>2</b></p> <p>MAX MOTOR FAN POWER INPUT <b>102,5 Watt</b></p>	<p>ELECTROSTATIC FILTER</p> <p>+ MODEL <b>- CRY</b></p> <p>+ MAX ELECTROSTATIC FILTER POWER INPUT <b>10 Watt</b> <b>230Vac 50Hz</b></p>
<p>DATE <b>20-08-2020</b> MADE IN EU <b>230V 50/60Hz</b> <span style="border: 1px solid black; padding: 2px;">QUALITY CONTROL</span></p>	<p style="text-align: right;"><span style="border: 1px solid black; padding: 2px;">QUALITY CONTROL</span> <small>COM-403386</small></p>



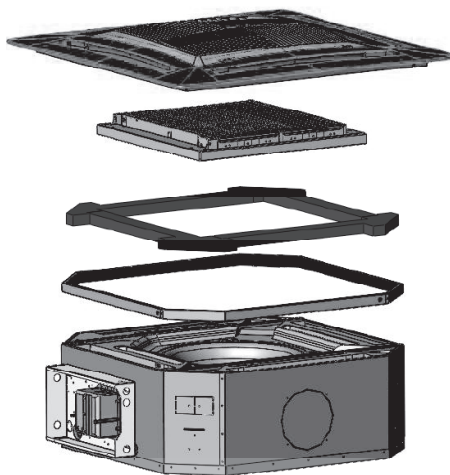
## 3 CASSETTE 800 - COD. 9079296

3.1

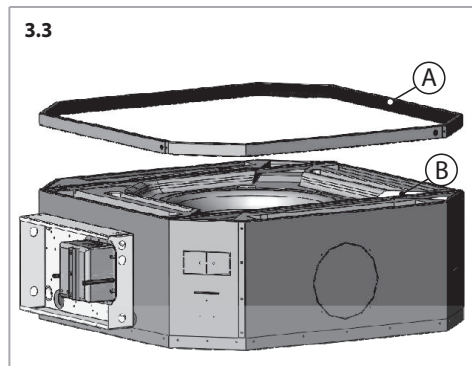


Los 4 tapones de polietileno forman parte del filtro y no deben tirarse.

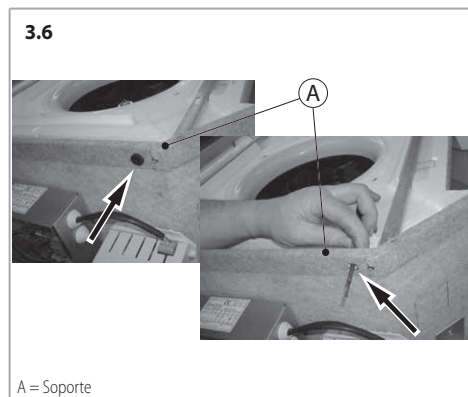
3.2



Aplicar el soporte "A" a la unidad "B":

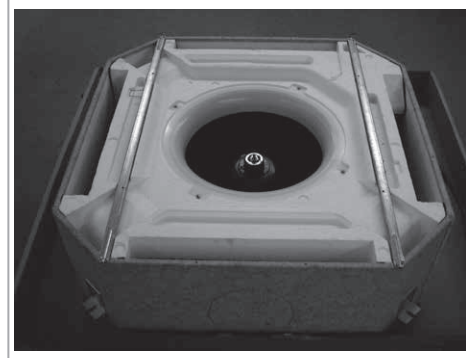


Situar el pasacables para cable de alta tensión (incluido) en el lado del aparato eléctrico.



Aplicar el aislante autoadhesivo a los 4 lados del soporte.

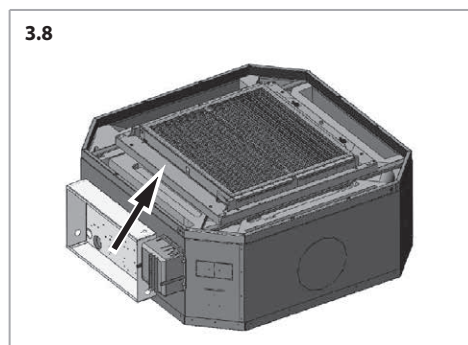
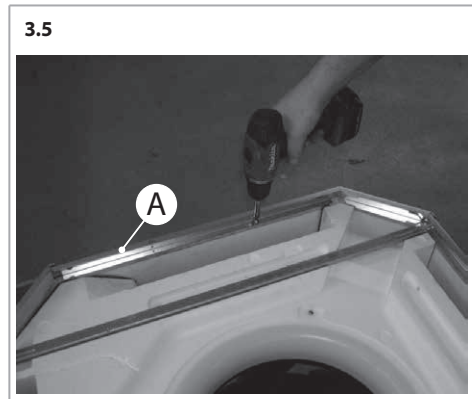
**3.4 Unidad "B"**



Fijar el soporte "A" con los 8 tornillos de 3,9 x 9,5 mm (incluidos).

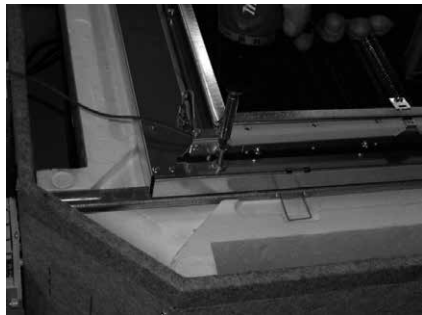


Colocar el soporte del filtro con la bisagra de rotación en el lado indicado en la figura 3.8.



Fijar el filtro con los 4 tornillos M 5x35 mm (incluidos).

3.9



Colocar el filtro con el cable de alta tensión hacia el aparato eléctrico.

3.10



Passar el cable de alta tensión por el pasacables del lado del aparato eléctrico.

3.11



Fija el aparato de alta tensión con los 3 tornillos autopercorantes de 3,9x13 mm (incluidos).

3.12

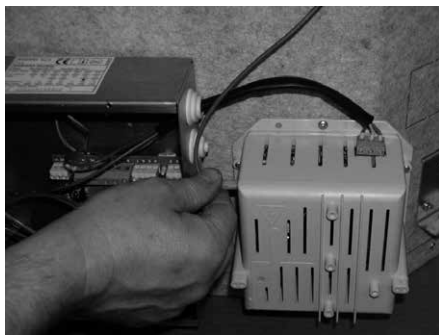


3.13



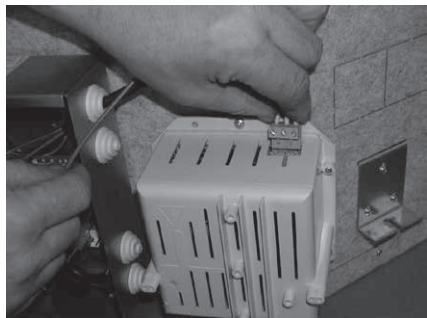
Conectar el cable de alta tensión.

3.14

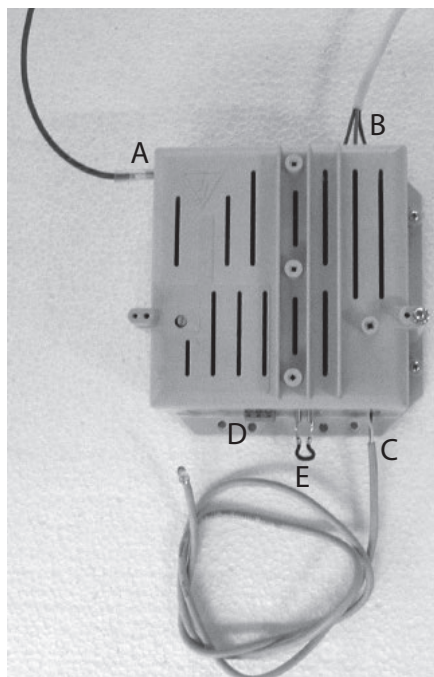


Conectar el conector para L-N-PE.

## 3.15

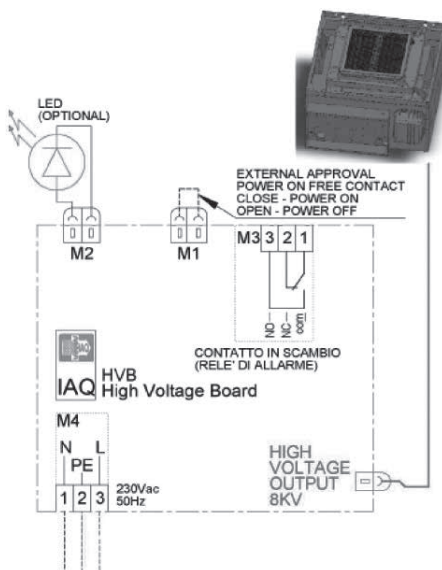


## 3.16



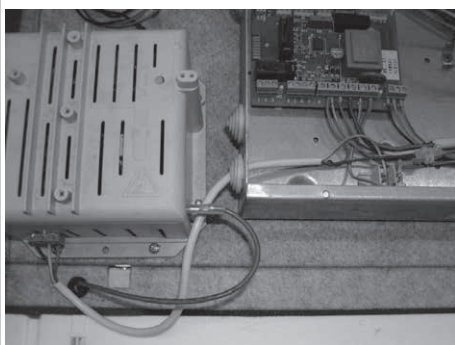
- A Cable de alta tensión - faston 6,3 con aislamiento externo de silicona
- B Tablero de bornes de alimentación de 230 V L-N-PE.
- C Conector de conexión de LED verde de señalización de funcionamiento del filtro (conexión opcional)
- D Tablero de bornes del relé de alarma de filtro sucio. Contacto de conmutación sin tensión remotizable.
- E Contacto ON-OFF.

## 3.17

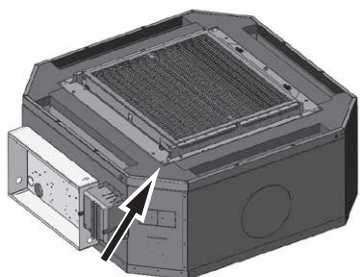
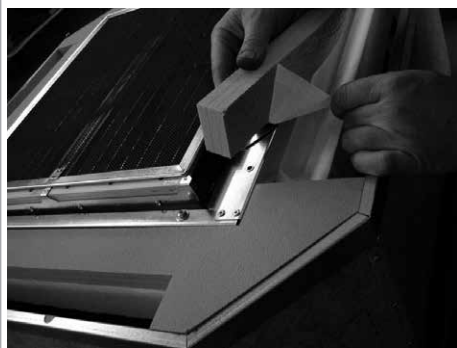


Conexión de los cables al aparato.

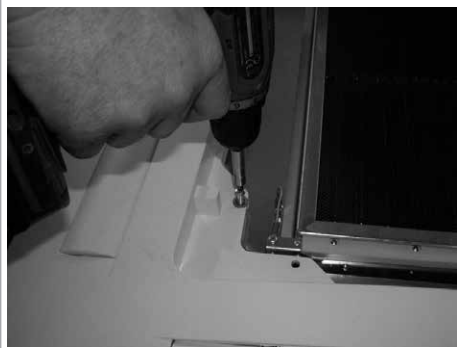
## 3.18



Aplicar 4 tapones autoadhesivos alrededor del soporte del filtro.



**3.19****3.20**


Fijar el aplique con los 4 tornillos M5x35 mm (incluidos con el aplique).

**3.21**

Etiqueta de datos CE del filtro electrostático para utilizar con la etiqueta de datos CE del ventilador.

**3.22**

	
FANCOIL <b>CASSETTE</b> VERSION MODEL CODE <b>0000000</b> GRANDEZZA SIZE <b>3</b> TUBI PIPES <b>2</b> MAX MOTOR FAN POWER INPUT <b>102,5 Watt</b>	ELECTROSTATIC FILTER + MODEL <b>- CRY</b>  + MAX ELECTROSTATIC FILTER POWER INPUT <b>10 Watt</b> <b>230Vac 50Hz</b>
DATE DATE <b>20-08-2020</b> MADE IN EU 230V 50/60Hz <span style="border: 1px solid black; padding: 2px;">QUALITY CONTROL</span>	<span style="border: 1px solid black; padding: 2px;">QUALITY CONTROL</span> <small>COM 403386</small>

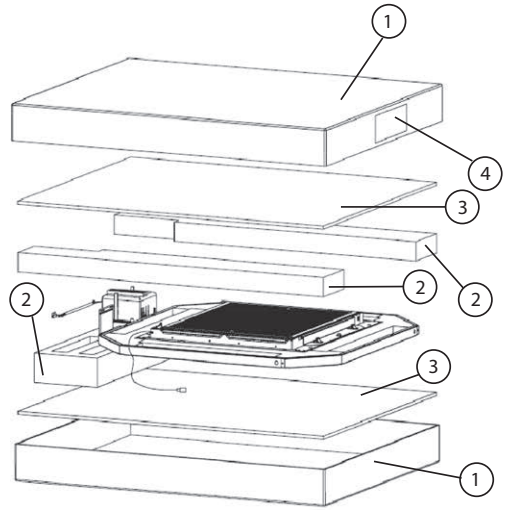
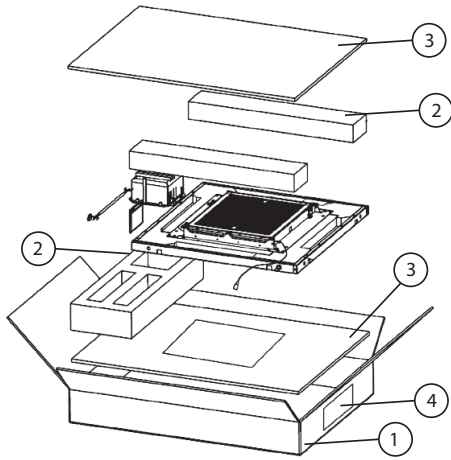








- IT** *Le descrizioni ed illustrazioni fornite nella presente pubblicazione si intendono non impegnative il Costruttore si riserva perciò il diritto, ferme restando le caratteristiche essenziali dei tipi descritti ed illustrati, di apportare, in qualunque momento, senza impegnarsi ad aggiornare tempestivamente questa pubblicazione, le eventuali modifiche che essa ritenesse convenienti per scopo di miglioramento o per qualsiasi esigenza di carattere costruttivo o commerciale.*
- EN** *The descriptions and illustrations provided in this publication are not binding: the manufacturer reserves the right, whilst maintaining the essential characteristics of the types described and illustrated, to make, at any time, without the requirement to promptly update this piece of literature, any changes that it considers useful for the purpose of improvement or for any other manufacturing or commercial requirements.*
- FR** *Les descriptions et les illustrations fournies dans cette publication ne sont pas contractuelles; la société se réserve donc le droit, tout en maintenant les caractéristiques essentielles des modèles décrits et illustrés, d'apporter, à tout moment, sans s'engager à mettre à jour rapidement cette publication, les éventuelles modifications qu'elle juge utile pour l'amélioration de ses produits ou toute autre exigence de fabrication ou de caractère commercial.*
- DE** *Die Beschreibungen und Abbildungen in diesem Prospekt sind unverbindlich. Vorbehaltlich der wesentlichen Eigenschaften der beschriebenen und abgebildeten Typen behält sich der Hersteller das Recht vor, jederzeit und ohne Verpflichtung zur umgehenden Aktualisierung dieses Prospektes eventuelle Änderungen anzubringen, die sie zum Zwecke der Verbesserung, oder aus konstruktiven oder kommerziellen Gründen für angezeigt hält.*
- ES** *Las descripciones e ilustraciones proporcionadas en esta publicación no se consideran vinculantes, por lo tanto, el fabricante se reserva el derecho, sin perjuicio de las características básicas de los tipos descritos e ilustrados, a realizar, en cualquier momento y sin comprometerse a actualizar constantemente esta publicación, cualquier modificación que considere conveniente para mejorar el contenido o por necesidades comerciales o de fabricación.*



ITEM		RICICLO / RECYCLING / RECYCLAGE / RECYCLING / RECICLAJE
1		Carta / Paper / Papier / Papier / Papel
2		Plastica / Plastic / Plastique / Kunststoff / Plástico
3		Plastica / Plastic / Plastique / Kunststoff / Plástico
4		Raccolta indifferenziata / General waste / Déchets généraux / Restmüll / Recogida indiferenciada

VERIFICA LE DISPOSIZIONI DEL TUO COMUNE