



Janus 05

Air Conditioner

TECHNICAL LEAFLET

Janus 05

Air Conditioner



Janus 05 unit heaters can be used to economically cool industrial, commercial and sporting facilities, transforming a traditional heating system using unit heaters into a system that can also be used in the summer months, significantly improving the working conditions.

The condensate collection tray is built into the appliance, while two-speed motors are fitted as standard. Upon request, controls with thermostat can also be supplied.

The Janus 05 unit heaters are made in 3 sizes, each with 3 and 4 row coils, for a total of 6 models, with heat outputs from 16 to 50 kW and cooling capacities from 5 to 15 kW.

TECHNICAL CHARACTERISTICS

- The **main casing** is **manufactured from galvanized prepainted steel** (1 mm thick) finished in light grey (RAL 9002), and it is assembled from three component parts, assembled with self-tapping screws for quick maintenance on the heat coil. The use of hot dip galvanised and pre-painted steel ensures consistency and excellent protection against corrosion.
- The **standard motor** fitted is a hermetically sealed and is maintenance free. The motor is 2 speeds, 3 phase, single voltage 400V/50Hz, protection IP55, class B, with klixon thermal protection that is triggered in the event of overheating. The rotation speed can be reduced by passing from delta to star connection.
- **Coil** with large heating surfaces with copper pipe and in aluminium fins.
- The **condensate collection tray** is fitted inside the unit. Made from galvanized steel insulated with polyolefin (PO) foam (class M1).

Janus 05 identification code

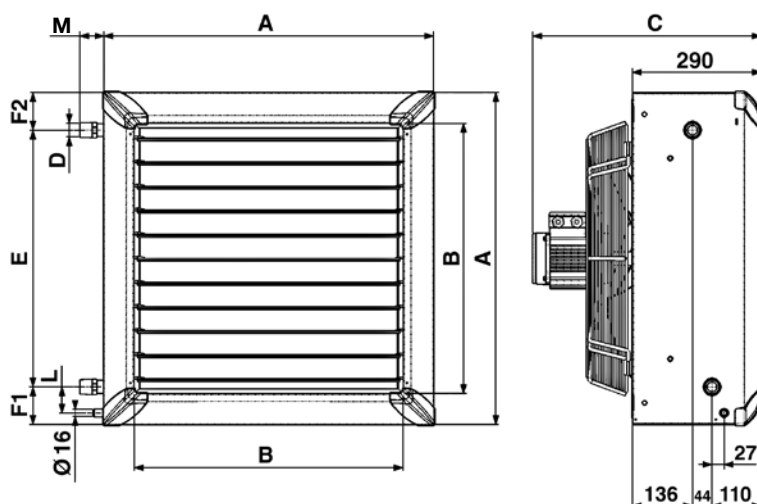
Reference: **46F43**

46	F	4	3
Motor 4/6 pole (1350/1000 r.p.m.)	Range Janus 05	Size 4	Rows 3

Janus 05



Janus 05 | DIMENSIONS, WEIGHT, WATER CONTENT



Model	A	B	C	D	E	F1	F2	L	M
46 F 23/24	526	390	500	1"	376	78	71	58	55
46 F 43/44	634	498	500	1"	476	76	83	58	55
68 F 63/64	742	606	525	1"	576	83	83	58	55

Model	Weight kg		Water content liters	
	3R	4R	3R	4R
46 F 23/24	25,0	26,0	1,7	2,2
46 F 43/44	32,5	34,0	2,7	3,4
68 F 63/64	42,5	44,5	4,0	5,1

Heating emission

Model		46 F 23		46 F 24		46 F 43		46 F 44	
Mounting height	m	2.5 ÷ 4				3 ÷ 4.5			
Speed	r.p.m.	1350	1000	1350	1000	1350	1000	1350	1000
Air flow	m ³ /h	2000	1365	1800	1270	3450	2290	3100	2000
Throw	m	11	7,5	10	6,5	16	12	15	11
Noise level at 5 m (*)	dB(A)	59	51	59	51	64	54	64	54
Water temperature 45/40 °C - Δt 5 °C Entering air temperature +15 °C	kW	8,47	6,65	9,66	7,62	14,44	11,15	16,55	12,27
	Leaving air temp. °C	27,4	29,3	30,7	32,6	27,3	29,2	30,6	32,9
Water temperature 85/75 °C - Δt 10 °C Entering air temperature +15 °C	kW	20,75	16,23	23,58	18,52	35,15	27,08	40,14	29,66
	Leaving air temp. °C	43,4	49,8	53,3	57,7	44,8	49,6	52,9	58,4
Water temperature 90/70 °C - Δt 20 °C Entering air temperature +15 °C	kW	19,86	15,63	22,76	18,00	33,86	26,26	39,04	29,10
	Leaving air temp. °C	44,0	48,5	52,0	56,5	43,7	48,5	51,8	57,6

Model		68 F 63		68 F 64	
Mounting height	m	3 ÷ 5			
Speed	r.p.m.	950	750	950	750
Air flow	m ³ /h	3930	3050	3510	2650
Throw	m	16	12	15	11
Noise level at 5 m (*)	dB(A)	60	52	60	52
Water temperature 45/40 °C - Δt 5 °C Entering air temperature +15 °C	kW	18,81	15,77	20,67	16,95
	Leaving air temp. °C	29,0	30,4	32,2	33,7
Water temperature 85/75 °C - Δt 10 °C Entering air temperature +15 °C	kW	45,46	38,07	49,79	40,75
	Leaving air temp. °C	48,8	52,1	56,5	60,0
Water temperature 90/70 °C - Δt 20 °C Entering air temperature +15 °C	kW	44,38	37,26	48,95	40,28
	Leaving air temp. °C	48,0	51,3	55,8	59,5

(*) = The sound pressure levels dB(A) are measured at a distance of 5 m, directional factor Q = 2, compliant with the EN 3744 standard.

Cooling emission

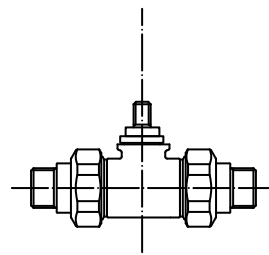
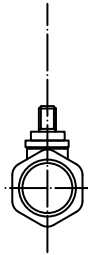
Modello		46 F23	46 F24	46 F43	46 F44
Mounting height	m	2,5 ÷ 4		3 ÷ 4,5	
Speed	r.p.m.	1000	1000	1000	1000
Air flow	m ³ /h	1365	1270	2290	2000
Throw	m	7,5	6,5	12	11
Noise level at 5 m (*)	dB(A)	51	51	54	54
Water temperature 7/12 °C - Δt 5 °C Entering air temperature +28 °C - R.H. 55%	kW Total	5,00	6,08	8,62	10,28
	kW Sensible	3,57	4,14	6,05	6,78
	Leaving air temp. °C	20,1	18,1	20,0	17,7
Water temperature 11/15 °C - Δt 4 °C Entering air temperature +28 °C - R.H. 55%	kW Total	3,57	4,27	6,21	7,32
	kW Sensible	3,25	3,62	5,43	5,86
	Leaving air temp. °C	20,8	19,4	20,8	19,1
Water temperature 9/14 °C - Δt 5 °C Entering air temperature +28 °C - R.H. 55%	kW Total	4,02	4,90	6,93	8,34
	kW Sensible	3,31	3,79	5,51	6,11
	Leaving air temp. °C	20,6	19,0	20,7	18,7

Modello		68 F63	68 F64
Mounting height	m	3 ÷ 5	
Speed	r.p.m.	750	750
Air flow	m ³ /h	3050	2650
Throw	m	12	11
Noise level at 5 m (*)	dB(A)	52	52
Water temperature 7/12 °C - Δt 5 °C Entering air temperature +28 °C - R.H. 55%	kW Total	13,08	15,28
	kW Sensible	8,79	9,78
	Leaving air temp. °C	19,9	16,8
Water temperature 11/15 °C - Δt 4 °C Entering air temperature +28 °C - R.H. 55%	kW Total	9,33	10,89
	kW Sensible	7,61	8,28
	Leaving air temp. °C	20,3	18,5
Water temperature 9/14 °C - Δt 5 °C Entering air temperature +28 °C - R.H. 55%	kW Total	10,62	12,51
	kW Sensible	7,91	8,75
	Leaving air temp. °C	20,0	18,0

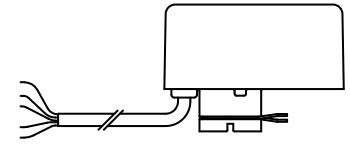
(*) = The sound pressure levels dB(A) are measured at a distance of 5 m, directional factor Q = 2, compliant with the EN 3744 standard.

VA2V 2 way valve

- Composed by:
- one 2-way valve
 - one ON-OFF 230V actuator



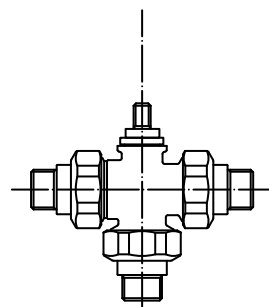
2 way valve



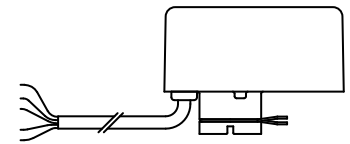
Actuator

VA3V 3 way valve

- Composed by:
- one 3-way valve
 - one ON-OFF 230V actuator



3 way valve



Actuator

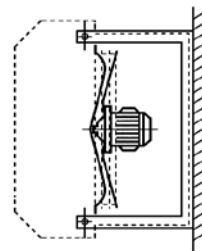
KIT-VA Extension kit

To be used with water valves (mandatory).



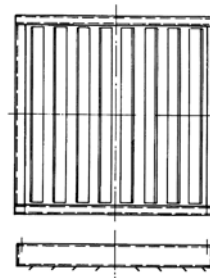
AMP Wall bracket

Horizontal discharge



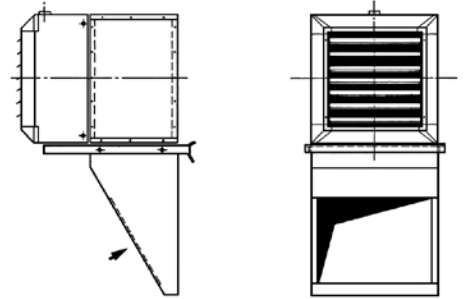
AD 4 way diffuser

To be used when discharging downflow to create a 4 way discharge pattern



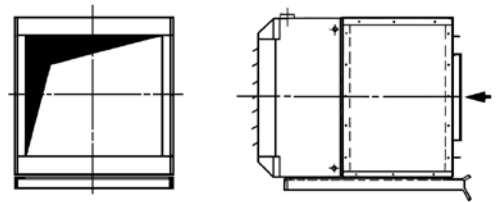
ARC Simple intake hood fitted underneath

Wall bracket included
Prepainted steel thickness 1 mm



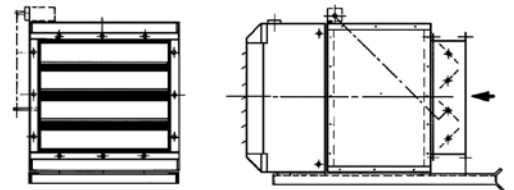
AE Fresh air box

Prepainted steel thickness 1 mm



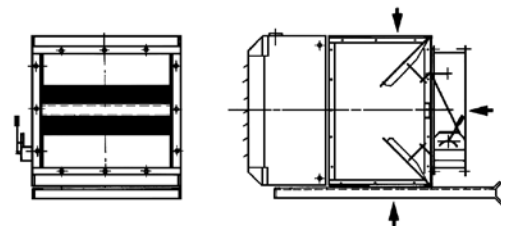
AES Fresh air box with manually operated damper
(can be motorized by the customer)

Prepainted steel thickness 1 mm.



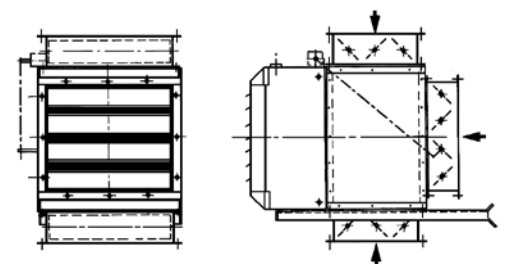
AM Internal/external air mixing box manually controlled

Prepainted steel thickness 1 mm.

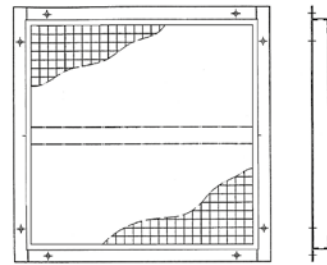


AMS Internal/external air mixing box, manually controlled
(can be motorized by customer)

Prepainted steel thickness 1 mm

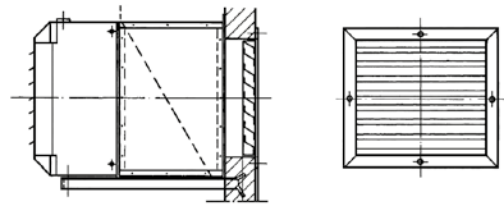


APP **Ball protection grid**



AG **External air intake grille suitable with AE and AES air boxes**

Prepainted steel thickness 1 mm



Controls

DSS **Delta-Star switch**
for two speed Delta-Star motors, 4/6 or 6/8 poles



BS 3-ST **Manual three-position switch with thermostat**
for two speed Delta-Star motors, 4/6 or 6/8 poles, with klixon thermic protection





A company of Arbonia Group
ARBONIA ▲

Follow us



Sabiana app



SABIANA SpA

Società a socio unico

Via Piave 53 - 20011 Corbetta (MI) Italia

T. +39 02 97203 1 r.a. • F. +39 02 9777282

info@sabiana.it

www.sabiana.it